

# PERSONAL PROTECTION

GLOVES • APPAREL • RAINWEAR • BOOTS



global resources... local connections



# global resources

Industry Proven, Work-Tested Gloves and Apparel



## High Dexterity



Pro Series™	2-3
Clarino™	3
Deerskin	3
Spilt Leather	3
Synthetic	2

## Leather • Cowhide/Pigskin • Deerskin/Goatskin



Leather	4-17
Driver's Style	4-7
Hi-Vis	16-17
Kevlar® Stitched	5, 7-9, 18-19
Lined	4-7, 11, 17
Palm Style	7-16
Premium	4-10, 16-17
Select	4-6, 10-13, 15-16
Standard	5, 14-15, 19
Welding	18-19

## Kevlar® • Dyneema® • Coated



Kevlar®	20-21
Latex/Nitrile Coated	21
PVC-Dotted Knit	20
Sleeves	21
String Knit	20
Terrycloth	21
Coated Gloves	22-23
Dyneema®	22
Latex/Nitrile Coated/Hi-Vis	23
Polyurethane Coated	23





# local connections

Inspired and Dedicated to Providing You Solutions

## Knitted • Cotton • General-Purpose

Canvas .....	27-28
Chore .....	30
Corduroy/Hi-Vis .....	32
Double Palm .....	30-31, 33
Hot Mills .....	34
Inspector's .....	35
Jersey .....	29
PVC Dotted/Coated/Hi-Vis .....	24-25
Sleeves .....	33
String Knits .....	26
Terrycloth .....	33



## Coated • Chemical Gloves

Disposables .....	45
Neoprene/Latex .....	43
Nitrile Coated .....	42
Nitrile Impregnated .....	37
PVC-Coated .....	38-41
Rubber Coated .....	44
Supported/Unsupported Neoprene .....	43
Unsupported Latex/Nitrile .....	43-44
Vinyl Coated .....	36
Vinyl Impregnated .....	36-37



## Apparel • Rainwear • Footwear

Apparel .....	46-53
Aprons .....	52-53
Polypropylene .....	49-50
POSI-WEAR™ .....	46-48
Sleeves .....	51
Rainwear .....	54-56
Footwear .....	56
Specifications .....	57



# high dexterity - synthetic leather



- FRAMING • AUTOMOTIVE • ELECTRICAL • HVAC
- HAND AND POWER TOOL USE • PLUMBING
- WAREHOUSE

## Pro-Series™ High-Dexterity Gloves with SynTuf Ultra® Leather

Designed for the professional who requires the ultimate in protection, durability and performance with unrestricted movement to get the job done. Machine washable/dryable. Pre-curved to conform to your hands with extra protection in the knuckles and fingertips. SynTuf Ultra® leather is soft, supple and tough. Features a wing thumb and comes in men's sizes M-XXL.

### Hook and Loop Wrist

#### ▲ Style 86540 - Brute®

Padded gel palm, vinyl impact patch. Capped fingers with silicone pads on index and middle fingers.

#### ▲ Style 86700 - 3 x 2®

Three fingers out. Silicone pads and gel padded palm. Neoprene padded knuckle.

#### ▲ Style 86650 - Box Handler Glove

Silicone web palm and silicone pads on three fingers. Capped fingers.

#### ▲ Style 86570 - Tank®

Padded palm. Four-way stretch polyester back. Silicone pads on thumb, index and middle fingers.

#### ▲ Style 86310 - SuperTech®

Four-way stretch polyester back. Terrycloth thumb.

#### ▲ Style 86150 - Job 1®

Padded palm. Silicone pads on thumb, index and middle fingers. Reinforced leather on index finger.

### Elastic Wrist

#### ▲ Style 86110 - The Task®

Reinforced knuckles. Capped fingers. Slip-on style.



Brute®  
Style 86540  
Sizes M-XXL



3X2®  
Style 86700  
Sizes M-XXL



Box Handler  
Style 86650  
Sizes M-XXL



Tank®  
Style 86570  
Sizes M-XXL



Super Tech®  
Style 86310  
Sizes M-XXL



Job 1®  
Style 86150  
Sizes M-XXL



The Task®  
Style 86110  
Sizes M-XXL

## Brute®



## 3X2®



## Tank®





# synthetic/natural leather - high dexterity

• FRAMING • AUTOMOTIVE • ELECTRICAL • HVAC • HAND AND POWER TOOL USE  
• PLUMBING • WAREHOUSE



## Pro-Series™ High-Dexterity Gloves

Four styles to choose from, each featuring a washable spandex back. Available in Clarino™ synthetic leather, premium black split leather or soft rich grain deerskin leather. Men's sizes M-XXL.

### ▲ Style 86300 - Washable Clarino™ Synthetic Leather Palm

Breathable Clarino™ leather on palm is made from a plastic polyurethane coating on a polyester shell. Hook and loop wrist. Keystone thumb.

### ▲ Style 86500 - Washable Reinforced Clarino™ Synthetic Palm

Reinforced padded patch palm. Finger caps on four fingers. Double polyester stitching. Wing thumb.

### ▲ Style 86000 - Split Leather Palm

Black split leather on palm for enhanced durability. Stylish blue back. Hook and loop wrist. Keystone thumb.

### ▲ Style 86400 - Rich Grain Deerskin Palm

Soft and supple deerskin provides comfort and durability. Reinforced leather finger caps. Hook and loop wrist. Wing thumb.



▲ Clarino™  
Leather

Style 86300  
Sizes M-XXL



▲ Clarino™ Leather

Style 86500  
Sizes M-XXL



▲ Split Leather

Style 86000  
Sizes M-XXL



▲ Premium  
Deerskin

Style 86400  
Size M-XL

# driver's - cowhide

- CONSTRUCTION • MASONRY • AGRICULTURE • IRON/STEEL WORK • MINING
- FOUNDRY OPERATIONS • TRANSPORTATION • ELECTRICAL CONTRACTORS

## Premium, Select and Standard Grain Cowhide Driver's Gloves

Quality leather for comfortable and reliable protection. A shirred elastic wrist ensures a secure fit.

- Weltd seams on middle fingers for added strength.
- Color-coded cotton hem for size identification.
- Straight or keystone thumb.
- Available with 3M™ Thinsulate®, Kevlar®, fleece or thermal lining.

### Unlined Driver's Style

- ▲ **Style 990 - Select Grain**  
Select grain leather with a straight thumb. Sizes: XS-XL.
- ▲ **Style 990-B - Standard Grain**  
Grain leather with a straight thumb. Sizes: S-XL.
- ▲ **Style 990K-A - Premium Grain**
- ▲ **Style 990K - Select Grain**
- ▲ **Style 990K-B - Standard Grain**  
Grain leather. Keystone thumb. Sizes: S-XXL

### Lined Driver's Style

- ▲ **Style 999KF - Red Fleece Lined**
- ▲ **Style KS990K - Kevlar® Lined**
- ▲ **Style 999KT - Thinsulate® Lined**  
Premium grain leather with a keystone thumb. Sizes: S-XL.
- ▲ **Style 999 - Thermal Lined**  
Select grain leather with a straight thumb. Sizes: S-XL.

◆ Premium ● Select ■ Standard

? What is a keystone thumb? See page 57 for definition.

	
<b>Style 990 • Sizes XS-XL</b> Straight Thumb	<b>Style 990K • Sizes XS-XXL</b> Keystone Thumb
	
<b>Style 999KF • Sizes S-XL</b> Keystone Thumb	<b>Style KS990K • Sizes S-XL</b> Keystone Thumb
	
<b>Style 999KT • Sizes S-XL</b> Keystone Thumb	<b>Style 999 • Sizes S-XL</b> Straight Thumb



# cowhide - driver's

• CONSTRUCTION • MASONRY • AGRICULTURE • IRON/STEEL WORK • MINING  
• FOUNDRY OPERATIONS • TRANSPORTATION • ELECTRICAL CONTRACTORS

	
<b>Style 990T</b> • Sizes S-XL Straight Thumb	<b>Style 990LS</b> • Sizes S-XL Straight Thumb
	
<b>Style 993K</b> • Sizes S-XXL Keystone Thumb	<b>Style 980</b> • Sizes S-XL Straight Thumb
	
<b>Style 988KT</b> • Sizes S-XL Keystone Thumb	<b>Style 988K</b> • Sizes S-XL Keystone Thumb

## Grain and Split Cowhide Driver's Gloves

Choose from durable grain leather, split leather or a combination of both.

- Color-coded cotton hem for size identification.
- Straight or keystone thumb.
- Available with 3M™ Thinsulate® or pile lining.

### Select Top Grain

#### ▲ Style 990T

Select grain leather. Ball and tape wrist for a snug fit. Slip-on cuff with straight thumb. Sizes: S-XL.

#### ▲ Style 990LS

Select grain leather. Leather strap buckle wrist. Slip-on cuff with straight thumb. Sizes: S-XL.

### Grain/Split Combination and Standard Split

#### ▲ Style 993K

Select grain palm and fingers with a split leather back. Shirred elastic back. Sewn with Kevlar® thread. Keystone thumb. Sizes: S-XXL.

#### ▲ Style 980

Standard split leather. Shirred elastic back. Straight thumb. Sizes: S-XL.

### Premium Shoulder Split

#### ▲ Style 988KT - Thinsulate® Lined

#### ▲ Style 988K - Pile Lined

Premium shoulder split leather. Shirred elastic back. Keystone thumb. Sizes: S-XL.

 Premium  Select  Standard

# driver's - pigskin

- CONSTRUCTION • MASONRY • AGRICULTURE • IRON/STEEL WORK • MINING
- FOUNDRY OPERATIONS • TRANSPORTATION • ELECTRICAL CONTRACTORS

## Premium and Select Grain Pigskin Driver's Gloves

Tough pigskin leather provides durable hand protection for general work applications. Pigskin is moisture resistant but also has excellent breathability, keeping hands cool and dry.

- Available with 3M™ Thinsulate®, red fleece or thermal lining.
- Straight or keystone thumb.
- Color-coded hem.

## Premium and Select Full Pigskin

### ▲ Style 9940KCF

Fully biodegradable, eco-friendly, chromium-free premium grain pigskin leather. Keystone thumb. Sizes: S-XL.

### ▲ Style 9940K

Premium grain pigskin. Keystone thumb. Sizes: S-XL.

### ▲ Style 994

Select grain pigskin. Straight thumb. Sizes: S-XL.

## Lined Premium and Select Pigskin

### ▲ Style 9940KT

Premium grain pigskin with a 3M™ Thinsulate® lining. Keystone thumb. Sizes: S-XXL.

### ▲ Style 9940KF

Select grain pigskin with a red fleece lining. Keystone thumb. Sizes: S-XL.

### ▲ Style 9940KWT

Select grain pigskin with a thermal lining. Keystone thumb. Sizes: S-XL.

◆ Premium ● Select ■ Standard

? What is a keystone thumb? See page 57 for definition.

 	
<p><b>Style 9940KCF • Sizes S-XL</b> Keystone Thumb</p>	<p><b>Style 9940K • Sizes S-XL</b> Keystone Thumb</p>
	 <p>Thinsulate® Lining</p>
<p><b>Style 994 • Sizes S-XL</b> Straight Thumb</p>	<p><b>Style 9940KT • Sizes S-XXL</b> Keystone Thumb</p>
 <p>Red Fleece Lining</p>	 <p>Thermal Lining</p>
<p><b>Style 9940KF • Sizes S-XL</b> Keystone Thumb</p>	<p><b>Style 9940KWT • Sizes S-XL</b> Keystone Thumb</p>



# deerskin/goatskin/pigskin

- CONSTRUCTION • MASONRY • AGRICULTURE • IRON/STEEL WORK • MINING
- FOUNDRY OPERATIONS • TRANSPORTATION • ELECTRICAL CONTRACTORS

	
<p><b>Style 9920K • Sizes XXS-XL</b> Keystone Thumb</p>	<p><b>Style 9920KT • Sizes XS-XL</b> Keystone Thumb</p>
	
<p><b>Style 991K • Sizes S-XL</b> Keystone Thumb</p>	<p><b>Style 5555 • Sizes L-XL</b> Wing Thumb</p>
	
<p><b>Style 1555 • Size Men's Large</b> Wing Thumb</p>	<p><b>Style 1555RF • Sizes S-XL</b> Wing Thumb</p>

## Deerskin, Goatskin and Pigskin Gloves

Choose deerskin for softness and warmth, goatskin for a combination of softness and liquid resistance, and pigskin for extreme breathability and water resistance.

- Straight or keystone thumb.
- Shirred elastic cuff for a secure fit.

## Premium and Select Grain Deerskin Driver's

- ▲ **Style 9920K**
- ▲ **Style 9920KT - Thinsulate® Lined**  
Premium grain deerskin. Keystone thumb. Sizes: XXS-XL (9920K) and S-XL (9920KT).
- ▲ **Style 9920KB**  
Select grain deerskin. Keystone thumb. Sizes: XS-XL.

## Premium Grain Goatskin Driver's

- ▲ **Style 991K**  
Premium grain goatskin. Keystone thumb. Sizes: S-XL.

## Premium Grain Pigskin with Canvas Back

- ▲ **Style 5555 - 2½" Safety Cuff**
- ▲ **Style 1555 - 2½" Knit Wrist**  
Premium grain pigskin with red/blue striped canvas back. 3M™ Thinsulate® lining. Wing thumb. Sizes: L-XL (5555) and Men's Large (1555).
- ▲ **Style 1555RF - Double Palm**  
Premium grain pigskin with blue canvas back. Crisscross stitched palm. Foam lining. Sewn with Kevlar® thread. Sizes: S-XL.

 Premium
  Select
  Standard

# leather palms - premium cowhide

• CONSTRUCTION • MASONRY • AGRICULTURE • IRON/STEEL WORK • MINING  
• TRANSPORTATION • ELECTRICAL CONTRACTORS • WOODWORKING

## Premium Heavy Side Split Leather Palms

Heavy side split leather gloves provide outstanding abrasion resistance and durability. Generously cut in a full-featured gunn pattern, each comes with an absorbent cotton lining, which is fully insewn on the thumb and little finger.

Sewn with super-strong, heat-resistant DuPont® Kevlar® thread. Gray tanned leather with a 9-oz natural white duck canvas elasticized back and hemmed rubberized cuff. Wing Thumb. Men's sizes S-XL.

### ▲ Style 500-AAA - 2¾" Safety Cuff

### ▲ Style 800-AAA - 4½" Gauntlet Cuff

Full feature work glove. Reinforced knuckle strap, pull tab at cuff, welted seams on middle fingers.

### ▲ Style 500DP-AAA - Double Palm

Highest quality premium leather palm.

### ▲ Style 500DP-AA - Double Palm

Premium leather palm.

### ▲ Style 800DP-AAA - Double Palm

Double leather palm. Reinforced double leather on high stress areas including index and middle fingers. Double Kevlar® stitched to prevent wear-through. Reinforced knuckle strap, pull tab at cuff, welted seams on two fingers.



**Style 500-AAA • Sizes S-XL**  
2¾" Rubberized Safety Cuff



**Style 800-AAA • Sizes S-XL**  
4½" Rubberized Gauntlet Cuff



**Style 500DP-AAA • Sizes S-XL**  
2¾" Rubberized Safety Cuff



**Style 500DP-AA • Sizes S-XL**  
2¾" Rubberized Safety Cuff



**Style 800DP-AAA • Sizes S-XL**  
4½" Rubberized Gauntlet Cuff

◆ Premium ● Select ■ Standard



# premium cowhide - leather palms

• CONSTRUCTION • MASONRY • AGRICULTURE • IRON/STEEL WORK • MINING  
• TRANSPORTATION • ELECTRICAL CONTRACTORS • WOODWORKING

	
<p><b>Style IC5 • Sizes S-XL</b> 2¾" Rubberized Safety Cuff</p>	<p><b>Style IC8 • Sizes S-XL</b> 4½" Rubberized Gauntlet Cuff</p>
	
<p><b>Style IC9 • Sizes S-XL</b> 4½" Rubberized Gauntlet Cuff</p>	
	
<p><b>Style IC65 • Sizes S-XL</b> 2¾" Rubberized Safety Cuff</p>	<p><b>Style IC5DP • Sizes S-XL</b> 2¾" Rubberized Safety Cuff</p>

**IRONCAT™**  
IRON TOUGH GLOVES

## Ironcat® Premium Heavy Side Split Leather Palms

Exceptional quality and attractive styling with a rich navy blue cuff to conceal dirt, grime and grease.

Sewn with super-strong, heat-resistant DuPont® Kevlar® thread for added durability and extended wear. Gray tanned leather with a 9-oz navy blue duck canvas elasticized back and hemmed, rubberized cuff. Wing thumb. Men's sizes S-XL.

### ▲ Style IC5 - 2¾" Safety Cuff

### ▲ Style IC8 - 4½" Gauntlet Cuff

Full feature work gloves. Reinforced knuckle strap, pull tab at cuff, welted seams on two fingers.

### ▲ Style IC6 - 2¾" Safety Cuff

### ▲ Style IC9 - 4½" Gauntlet Cuff

Full leather back. Shirred elastic at the wrist. Pull tab at cuff, welted seams on middle fingers.

### ▲ Style IC65 - ¾ leather back

Shirred elastic at the wrist. Pull tab at cuff, welted seams on middle fingers.

### ▲ Style IC5DP - 2¾" Safety Cuff

### ▲ Style IC8DP - 4½" Gauntlet Cuff

Reinforced double leather on the high stress areas including palm, index and middle fingers. Double Kevlar® stitched in a crisscross pattern to prevent wear-through. Reinforced knuckle strap. Pull tab at cuff, welted seams on middle fingers.

◆ Premium    ◆ Select    ◆ Standard

# leather palms - cowhide

• CONSTRUCTION • MASONRY • AGRICULTURE • IRON/STEEL WORK • MINING •  
TRANSPORTATION • ELECTRICAL CONTRACTORS • WOODWORKING

## Side Split Leather Palm Work Gloves

Full-featured gunn pattern work gloves come with an absorbent cotton lining, which is fully in-sewn on the thumb and little finger. Features include a reinforced knuckle strap, welted seams on the middle fingers and a pull tab. Wing thumb.

### Premium Heavy Side Split Leather

#### ▲ Style 500-AA - Safety Cuff

#### ▲ Style 800-AA - Gauntlet Cuff

Full feature work gloves. Full leather on index finger for added wear. Sizes: L-XL (500-AA), Men's Large (800-AA).

### Select Side Split Shoulder Leather

#### ▲ Style 500WRC - Safety Cuff

#### ▲ Style 800AW - Gauntlet Cuff

Good general-duty work gloves. Full leather on index finger for added wear. Rubberized cuff. Sizes: Men's Large.

#### ▲ Style 500DC - Men's

#### ▲ Style 500LDC - Women's

Select side split leather has the same features as above except this glove can be laundered. White cloth hem is colorfast and will not run or bleed through. 2½" washable safety cuff. Moderate washing recommended.

#### ▲ Style 500Y - Dove Gray Leather

#### ▲ Style 558Y - Russet Brown Leather

Durable and attractive yellow canvas features either dove gray or russet brown select split leather. Elastic back for a comfortable fit. Sizes: S-XXL (500Y), Men's Large (558Y).

#### ▲ Style 558OR - Dove Gray Leather

Durable safety orange canvas with dove gray select split leather. 2½" rubberized safety cuff. Size: Men's Large.

◆ Premium ● Select ■ Standard

	
<p><b>Style 500-AA • Sizes L-XL</b> 2½" Rubberized Safety Cuff</p>	<p><b>Style 800-AA • Size Men's Large</b> 4½" Rubberized Gauntlet Cuff</p>
	
<p><b>Style 500WRC • Size Men's Large</b> 2¼" Rubberized Safety Cuff</p>	<p><b>Style 500DC • Sizes Men's, Women's</b> 2½" Washable Safety Cuff</p>
	
<p><b>Style 500Y • Sizes S-XXL</b> 2½" Rubberized Safety Cuff</p>	<p><b>Style 558Y • Size Men's Large</b> 2½" Rubberized Safety Cuff</p>



# cowhide - leather palms

- CONSTRUCTION • MASONRY • AGRICULTURE • IRON/STEEL WORK • MINING
- TRANSPORTATION • ELECTRICAL CONTRACTORS • WOODWORKING

	
<b>Style 558</b> • Sizes Men's L-XL, Women's 2 1/2" Rubberized Safety Cuff	<b>Style 858</b> • Sizes S-XL 4 1/2" Rubberized Gauntlet Cuff
	
<b>Style 528</b> • Sizes L-XL 2 1/2" Plasticized Safety Cuff	<b>Style 500SC</b> • Size Men's Large 2 1/2" Starched Safety Cuff
	
<b>Style 5558T</b> • Size L-XL 2 1/2" Rubberized Safety Cuff	<b>Style 500-EAF</b> • Size Men's Large 2 1/2" Starched Safety Cuff

## Select Shoulder Leather Palm Work Gloves

Full-feature, select shoulder leather palm work gloves feature a red/blue striped canvas back.

- Elastic at the wrists.
- Pull tab for easy on and off.
- Leather fingertips and knuckle strap.
- Wing thumb.
- Color-coded cloth hem for easy size identification.

## Several cuff styles to choose from:

- ▲ **Style 558**  
2 1/2" rubberized safety cuff.  
Sizes: Men's Large, XL and Women's.
- ▲ **Style 858**  
4 1/2" rubberized gauntlet cuff.  
Sizes: S-XL.
- ▲ **Style 528**  
Laundryable. 2 1/2" plasticized safety cuff. Sizes: L, XL.
- ▲ **Style 500SC - Men's**
- ▲ **Style 500SCL - Women's**  
An economical full feature glove. 2 1/2" heavy starched safety cuff. Size: Men's Large (500SC) and Women's (500SCL).
- ▲ **Style 5558T - Thinsulate® Lined**  
2 1/2" rubberized safety cuff. Size: XL.
- ▲ **Style 5558P - Pile Lined**  
2 1/2" rubberized safety cuff. Sizes: L-XL.
- ▲ **Style 500-EAF - Fleece Lined**  
2 1/2" heavy starched safety cuff. Size: Men's Large.

 Premium
  Select
  Standard

# leather palms - cowhide

• CONSTRUCTION • MASONRY • AGRICULTURE • IRON/STEEL WORK • MINING  
• TRANSPORTATION • ELECTRICAL CONTRACTORS • WOODWORKING

## Split Shoulder Leather Palm Work Gloves

Select shoulder gunn pattern leather palm work gloves feature a green/pink striped canvas back.

- Color-coded hem.
- Leather fingertips and knuckle strap for added durability.

### Several cuff styles to choose from:

- ▲ **Style 500-A - 2½" Rubberized Safety Cuff**
- ▲ **Style 800-A - 4½" Rubberized Gauntlet Cuff**  
Select split leather palm work gloves.  
Size: Men's Large.
- ▲ **Style 500**  
Select split leather. 2½" rubberized safety cuff. Sizes: S-XL.
- ▲ **Style 548 - 2½" Plasticized Safety Cuff**
- ▲ **Style 828 - 4½" Plasticized Safety Cuff**  
Select split leather.  
Size: Men's Large.
- ▲ **Style 500DP-A - 2½" Rubberized Safety Cuff**
- ▲ **Style 800DP-A - 4½" Rubberized Safety Cuff**  
Double palm. Select split double leather palm and index finger. Reinforced crisscross stitching on palm. Size: Men's Large.
- ▲ **Style 500DP - 2½" Rubberized Safety Cuff**
- ▲ **Style 800DP - 4½" Rubberized Safety Cuff**  
Select split double leather palm. Size: S-XL (500DP) and Men's Large (800DP).
- ▲ **Style 528DP - 2½" Plasticized Safety Cuff**  
Select split double leather palm. Size: Men's Large.



**Style 500-A • Size Men's Large**  
2½" Rubberized Safety Cuff



**Style 800-A • Size Men's Large**  
4½" Rubberized Gauntlet Cuff



**Style 500DP-A • Size Men's Large**  
2½" Rubberized Safety Cuff



**Style 800DP-A • Size Men's Large**  
4½" Rubberized Gauntlet Cuff

◆ Premium ● Select ■ Standard



# cowhide - leather palms

• CONSTRUCTION • MASONRY • AGRICULTURE • IRON/STEEL WORK • MINING  
• TRANSPORTATION • ELECTRICAL CONTRACTORS • WOODWORKING



**Style 500-EA • Size Men's Large**  
2 1/2" Rubberized Safety Cuff



**Style 600-EA • Size Men's Large**  
2 1/2" Rubberized Safety Cuff



**Style 900-EA • Size Men's Large**  
4 1/2" Rubberized Gauntlet Cuff



**Style 650-EA • Size Men's Large**  
2 1/2" Rubberized Safety Cuff



**Style 950-EA • Size Men's Large**  
4 1/2" Rubberized Gauntlet Cuff



**Style 500LC-A • Size Men's Large**  
2 1/2" Full Leather Safety Cuff

## Select Shoulder Leather Palm Work Gloves

Select split leather work gloves provide consistent quality in the leather, construction and stitching. Full feature gunn pattern comes in a leather palm, 3/4 leather back and full leather back. All have a durable green/pink canvas back.

- Color-coded hem.
- Pull tab for easy on and off.
- Leather fingertips and knuckle strap for added durability.
- 2 1/2" safety cuff or 4 1/2" gauntlet cuff.
- Fleece lined on the palm.
- Wing thumb.

▲ **Style 500-EA - 2 1/2" Rubberized Safety Cuff**

▲ **Style 800-EA - 4 1/2" Rubberized Gauntlet Cuff**

Canvas back with leather palm.  
Size: Men's Large.

▲ **Style 600-EA - 2 1/2" Rubberized Safety Cuff**

▲ **Style 900-EA - 4 1/2" Rubberized Gauntlet Cuff**

Full leather back and leather palm.  
Size: Men's Large.

▲ **Style 650-EA - 2 1/2" Rubberized Safety Cuff**

▲ **Style 950-EA - 4 1/2" Rubberized Gauntlet Cuff**

3/4 leather back and full leather palm.  
Size: Men's Large.

## Select Shoulder Leather

▲ **Style 500LC-A**

Unique leather palm glove in a standard gunn pattern features a split leather cuff for increased protection at the wrist.  
Size: Men's Large.

◆ Premium    ● Select    ■ Standard

# leather palms - cowhide

• CONSTRUCTION • MASONRY • AGRICULTURE • IRON/STEEL WORK • MINING  
• TRANSPORTATION • ELECTRICAL CONTRACTORS • WOODWORKING

## Standard Leather Palm Gloves

Standard shoulder gray leather provides economical and reliable hand protection. Comes in blue/red striped canvas back or blue denim.

- Welted seams on middle fingers.
- Leather knuckle strap.
- Pull tab on cuff for easy on and off.
- Color-coded hem for easy size identification.
- 2½" safety cuff or 4½" gauntlet cuff.
- Wing thumb.

## Several styles to choose from:

### Leather Palm - Blue/Red Striped Canvas Back

- ▲ **Style 400-SC**  
Starched 2½" safety cuff.  
Size: Men's Large.
- ▲ **Style 400-SCL**  
Starched 2½" safety cuff.  
Size: Women's.
- ▲ **Style 800SC**  
Starched 4½" gauntlet cuff.  
Size: Men's Large.
- ▲ **Style 400DP**  
Patch palm. Starched 2½" safety cuff.  
Size: Men's large.

### Leather Palm - Denim Cuff

- ▲ **Style 500BD-B**  
Launderable. 2½" safety cuff.  
Size: Men's Large.
- ▲ **Style 500BD-BR**  
Patch palm. Launderable. 2½" safety cuff. Size: Men's Large.



**Style 400-SC** • Sizes Men's and Women's  
2½" Starched Safety Cuff



**Style 400DP** • Size Men's Large  
2½" Starched Safety Cuff



**Style 500BD-B** • Size Men's Large  
2½" Denim Safety Cuff



**Style 500BD-BR** • Size Men's Large  
2½" Denim Safety Cuff

◆ Premium ● Select ■ Standard



# cowhide - leather palms

• CONSTRUCTION • MASONRY • AGRICULTURE • IRON/STEEL WORK • MINING  
• TRANSPORTATION • ELECTRICAL CONTRACTORS • WOODWORKING



**Style 350-EA** • Sizes Men's and Women's  
Green Knit Wrist



**Style 100Y** • Sizes Men's and Women's  
Navy Blue Knit Wrist



**Style 100** • Sizes Men's and Women's  
White Knit Wrist



**Style 100G** • Size Men's Large  
White Knit Wrist



**Style 100P** • Sizes Men's and Women's  
White Knit Wrist



**Style 300** • Size Men's Large  
2 1/2" Starched Safety Cuff

## Select and Standard Shoulder Leather Palm Gloves with Knit Wrist

### Select

- ▲ **Style 350** - Men's
- ▲ **Style 350L** - Women's
- ▲ **Style 350-EA** - Men's
- ▲ **Style 350L-EA** - Women's
- Select shoulder leather palm.
- Striped canvas back.
- Reinforced leather knuckle strap, full index finger and fingertips.
- Knit wrist to conceal dirt.
- Styles 350/350L have blue/red stripes, Styles 350-EA/350L-EA have green/pink stripes.
- Wing thumb.
- ▲ **Style 100Y** - Men's
- ▲ **Style 200Y** - Women's
- Durable select shoulder leather palm.
- Yellow canvas back.
- Navy blue knit wrist to conceal dirt.
- Straight thumb.

### Standard

- ▲ **Style 100** - Men's Red/Blue Striped Canvas
- ▲ **Style 200** - Women's Red/Blue Striped Canvas
- ▲ **Style 100G** - Men's Green/Pink Striped Canvas
- Shoulder leather palm and fingers.
- Clute cut for comfort and fit.
- Natural white knit wrist.
- Straight thumb.
- ▲ **Style 100P** - Patch Leather Palm
- Red/blue striped canvas back.
- Straight thumb.
- Sizes: Men's and Women's.
- ▲ **Style 300** - Leather Palm with Canvas Safety Cuff
- Shoulder leather palm.
- 2 1/2" starched safety cuff.
- Red/blue striped canvas back and cuff.
- Straight thumb.
- Size: Men's Large.

◆ Premium ● Select ■ Standard

# leather palms - specialty/high visibility

- MASONRY • AGRICULTURE • IRON/STEEL WORK • WAREHOUSE • WOODWORKING
- ROAD CONSTRUCTION • RAILROAD WORK

## Specialty Leather Palm Gloves

- Reinforced leather on knuckle, full index finger and fingertips.
- Rubberized 2½" safety cuff or 4½" gauntlet cuff.
- Elastic back.
- Leather pull tab for easy on and off.
- Color-coded hem.
- Wing thumb.

## Chrome-Free Brushed Pigskin

- ▲ **Style 500DPCF - Double Palm**  
Premium fully biodegradable, eco-friendly, chromium-free pigskin leather. Brown cotton canvas back. Crisscross stitch pattern prevents wear-through. Sizes: L-XL.

## Brushed Pigskin Leather

- ▲ **Style 500P**  
Select tan pigskin with a blue/red canvas back. Size: Men's Large.

## Grain Cowhide

- ▲ **Style 5000 - Safety Cuff**
- ▲ **Style 8000 - Gauntlet Cuff**  
Premium top-grain cowhide leather palm. Natural white canvas back. Sizes: S-XL.
- ▲ **Style 5000-B**  
Select top grain cowhide with a patch palm. Yellow/blue striped canvas back. Size: Men's Large.

## High-Visibility Grain Cowhide

- ▲ **Style HVO5000 - Safety Cuff**
- ▲ **Style HVO8000 - Gauntlet Cuff**  
Premium top grain cowhide leather. Two ¾" reflective stripes on 1½" green bands. Rubberized cuffs. Wing thumb. Sizes: S-XXL.



◆ Premium ● Select ■ Standard



**Style 500DPCF • Sizes L-XL**  
2½" Rubberized Safety Cuff



**Style 500P • Size Men's Large**  
2½" Rubberized Safety Cuff



**Style 5000 • Size Men's Large**  
2½" Rubberized Safety Cuff



**Style 5000-B • Size Men's Large**  
2½" Rubberized Safety Cuff



**Style HVO5000 • Sizes S-XXL**  
2½" Rubberized Safety Cuff



**Style HVO8000 • Sizes S-XXL**  
4½" Rubberized Gauntlet Cuff



# high visibility - leather palms

- IRON/STEEL WORK • WAREHOUSE • WOODWORKING • ROAD CONSTRUCTION
- RAILROAD WORK • LAW ENFORCEMENT • MINING



## High-Visibility Gloves

3M™ Scotchlite™ reflective silver fabric trim provides excellent visibility in darkness and low-light conditions. (Style HVO500 utilizes silver reflective tape.)

- Fluorescent orange polyester back.
- 3M™ Scotchlite™ meets ANSI/ISEA 107-1999 Level 2.

## Premium Cowhide

- ▲ **Style HVO500 - Safety Cuff**  
Premium split cowhide with rubberized safety cuff. Two stripes of  $\frac{3}{4}$ " reflective tape on  $1\frac{1}{2}$ " polyester bands. Wing thumb. Sizes: S-XL.
- ▲ **HVO990K - Driver's**  
Premium top grain leather. 2.1" reflective stripe with a  $\frac{3}{4}$ " green band in the middle. Keystone thumb. Sizes: S-XL.

## Premium Grain Pigskin

- ▲ **Style HVO1555 - Gray Palm**
- ▲ **Style HVO1555B - Black Palm**  
 $\frac{3}{4}$ " reflective stripe on a 2.2" green band. 3M™ Thinsulate® lined. Knit wrist. Wing thumb. Sizes: S-XL (HVO1555) and S-XXL (HVO1555B).
- ▲ **Style HVO5555 - Safety Cuff**  
 $\frac{3}{4}$ " reflective stripe on 2.2" green band on the cuff,  $\frac{3}{4}$ " reflective stripe on  $1\frac{1}{2}$ " green band on the back. 3M™ Thinsulate® lined. Wing thumb. Size S-XL.
- ▲ **Style HVO9940KT - Driver's**  
2.1" reflective stripe with a  $\frac{3}{4}$ " green band in the middle. 3M™ Thinsulate® lined. Keystone thumb. Sizes: S-XL.

? What is a keystone thumb? See page 57 for definition.

◆ Premium    ● Select    ■ Standard

	
<b>Style HVO500 • Sizes S-XL</b> 2 $\frac{1}{2}$ " Rubberized Safety Cuff	<b>Style HVO990K • Sizes S-XL</b> Slip-On Driver's
	
<b>Style HVO1555 • Sizes S-XL</b> Knit Wrist	<b>Style HVO1555B • Sizes S-XXL</b> Knit Wrist • Waterproof
	
<b>Style HVO5555 • Sizes S-XL</b> 2 $\frac{1}{2}$ " Rubberized Safety Cuff	<b>Style HVO9940KT • Sizes S-XL</b> Slip-On Driver's

# welder's - premium

- STEEL MILLS • SHIPYARDS • MANUFACTURING • ELECTRICAL MIG OR TIG WELDING
- AUTOMOTIVE • GAS WELDING • TORCH WORK

## Premium Leather Welder's Gloves

Durable premium leather has the heat and abrasion resistance needed for tough welding applications.

- Side split cowhide.
- Sewn with Kevlar® thread.
- Cotton sock lining.
- Men's size Large.

### ▲ Style 2086GLF - Heavy Foundry Leather

Fully insulated. Reinforced thumb strap. Straight thumb.

### ▲ Style 945 - Men's Blue\*

### ▲ Style 945L - Women's Blue

Reinforced welted seams and thumb strap. Wing thumb.

### ▲ Style 940 - Green

Reinforced welted seams. Wing thumb.

### ▲ Style 9400 - Russet\*

Reinforced welted seams and thumb strap. Straight thumb.

## Mig Tig Welder's Gloves

For Mig Tig, heli-arc and other welding applications requiring both dexterity and a high level of protection.

### ▲ Style 6000 - Cowhide

Premium top-grain cowhide. Sewn with Kevlar® thread. Split leather gauntlet cuff. Wing thumb. Sizes: S-XL.

### ▲ Style 9200 - Mr. Tigger

Premium split deerskin. 4½" duck gauntlet cuff. Straight thumb. Sizes: S-XL.

### ▲ Style 9960 - Safety Cuff

### ▲ Style 9980 - Gauntlet Cuff

Premium goatskin. Straight thumb. Sizes: S-XXXL (9960) and M-XXXL (9980).

\*Available in left hand (LHO) or right hand only (RHO).

◆ Premium    ● Select    ■ Standard



**Style 2086GLF • Size Men's Large**  
Full Leather Gauntlet Cuff



**Style 945 • Size Men's Large**  
Full Leather Gauntlet Cuff



**Style 940 • Size Men's Large**  
Full Leather Gauntlet Cuff



**Style 9400 • Size Men's Large**  
Full Leather Gauntlet Cuff



**Style 6000 • Sizes S-XL**  
Split Leather Gauntlet Cuff



**Style 9200 • Sizes S-XL**  
Duck Gauntlet Cuff



**Style 9960 • Sizes S-XXXL**  
Split Leather Safety Cuff





# select/standard - welder's

• STEEL MILLS • SHIPYARDS • MANUFACTURING • AUTOMOTIVE  
• GAS WELDING • TORCH WORK



**Style 9401 • Size Men's Large**  
Full Leather Gauntlet Cuff



**Style 9300 • Size Men's Large**  
Full Leather Gauntlet Cuff



**Style 940R • Size Men's Large**  
Full Leather Gauntlet Cuff



**Style 942 • Size Men's Large**  
Full Leather Gauntlet Cuff

## Leather Welder's Gloves

Rugged, tanned thermal split leather provides good heat and abrasion resistance, and offers reliable protection for tough welding jobs. One-piece palm has no exposed seams.

- Cotton sock lining absorbs perspiration.
- Reinforced welted seams.
- Full leather gauntlet cuffs.
- Gunn pattern.
- Men's size Large.

## Select Leather

- ▲ **Style 9401 - Brown/Gray**  
Two-tone select side split leather. Sewn with Kevlar® thread. Reinforced thumb strap. Self hem. Wing thumb.
- ▲ **Style 9300 - Gray**  
Gray select shoulder leather. Cotton hem. Wing thumb.
- ▲ **Style 930K**  
Gray select shoulder leather. Sewn with Kevlar® thread. Wing thumb.

## Standard Leather

- ▲ **Style 930 - Men's\***
- ▲ **Style 930L - Women's**  
Gray standard shoulder leather. Cotton hem. Wing thumb.
- ▲ **Style 940R - Russet**  
Standard shoulder leather. Self hem. Straight thumb.
- ▲ **Style 942 - Black**  
Standard shoulder leather. Cotton hem. Wing thumb.

\*Available in left hand (LHO) or right hand only (RHO).

◆ Premium ● Select ■ Standard

# cut-resistant - Kevlar® string knit

• AUTOMOTIVE • GLASS HANDLING • SHEET METAL WORK • CUTTING APPLICATIONS

## Kevlar® String Knit Gloves

DuPont™ Kevlar® is a lightweight synthetic material made of strong para-aramid fibers. It is pound for pound five times stronger than steel, providing outstanding cut, slash and heat resistance.

### 100% Kevlar® Leather Palm

#### ▲ Style 35KJYD

Regular weight 7-cut. Crisscross stitched premium split shoulder leather palm. Reinforced thumb crotch. Sizes: L-XL.



Style 35KJYD • Sizes L-XL  
Leather Palm



Style 35K • Sizes Men's and Women's  
100% Kevlar®

### 100% Kevlar®

#### ▲ Style 35K - Men's

#### ▲ Style 35KL - Women's

Regular weight 7-cut.

#### ▲ Style 37K - Men's

#### ▲ Style 37KL - Women's

Heavyweight 7-cut.

#### ▲ Style 34K - Men's

#### ▲ Style 34KL - Women's

Regular weight 13-cut.



Style 37K • Sizes Men's and Women's  
100% Kevlar®

### Kevlar®/Cotton Blend

#### ▲ Style 35KE - Men's

#### ▲ Style 35KEL - Women's

Medium weight.

### PVC-Dotted Kevlar®

#### ▲ Style 35KDBS - Men's

#### ▲ Style 35KDBSL - Women's

100% Kevlar®. Regular weight. PVC dots on both sides.

#### ▲ Style 35KD - Men's

#### ▲ Style 35KDL - Women's

100% Kevlar®. Regular weight. PVC dots on one side.

#### ▲ Style 35KDF - Fingerless Men's

#### ▲ Style 35KDFL - Fingerless Women's

100% Kevlar®. Regular weight. PVC dots on both sides.

#### ▲ Style 35KDEBS - Men's

#### ▲ Style 35KDEBSL - Women's

Kevlar®/cotton. Medium weight. PVC dots on both sides.



Style 35KD • Sizes Men's and Women's  
100% Kevlar®



Style 35KDF • Sizes Men's and Women's  
100% Kevlar®



# Kevlar® terry/knit coated - cut-resistant

• CUTTING APPLICATIONS • BOTTLING AND CANNING • RECYCLING • MANUFACTURING



**Style K24KW** • Size Men's Large  
100% Kevlar®



**Style K24KWB** • Size Men's Large  
Kevlar®/Cotton Blend



**Style 700KSLC** • Sizes S-XL  
Latex Coated



**Style 713KSNF** • Sizes S-XXL  
Nitrile Coated



**Style 2514K** • Size 14" Length  
100% Kevlar®



**Style 2518KT** • Size 18" Length  
100% Kevlar®

## Kevlar® Gloves and Sleeves

### Kevlar® Terrycloth Gloves

▲ **Style K24KW - Men's**  
▲ **Style K24KWL - Women's**  
100% Kevlar®. Loop-out terrycloth provides cut resistance and moderate heat protection. Knit wrist. Sizes: Men's and Women's.

▲ **Style K24KWB - Men's**  
▲ **Style K24KWBL - Women's**  
Kevlar®/cotton blend. Loop-out terrycloth for moderate heat protection. Knit wrist. Sizes: Men's and Women's.

### Coated Kevlar® Gloves

▲ **Style 700KSLC - Latex Coated**  
▲ **Style 713KSNF - Nitrile Coated**  
100% Kevlar® with coated palm and fingertips for added protection, grip and excellent dexterity. Color-coded hem. Sizes: S-XL (700KSLC) and S-XXL (713KSNF).

### 100% Kevlar® Sleeves

Protect the wrist and forearm from cuts, slashes and heat.

▲ **Style 2514K - 14"**  
Two-ply tubular knit without thumb slot. Also available in 10", 12", 18", 20" and 24" lengths. 20" length has a Velcro® strap to ensure a secure fit.

▲ **Style 2518KT - 18"**  
Two-ply tubular knit with thumb slot. Also available in 10", 12", 14" and 24" lengths. The 24" length is available with a Velcro® strap to ensure a secure fit.

▲ **Style 2510KE - 10"**  
Single-ply knit without thumb slot. Also available in 14" and 24" lengths.

▲ **Style 2512KTE - 12"**  
Single-ply knit with thumb slot. Also available in 18" length.

# cut-resistant - Dyneema®

• AUTOMOTIVE • GLASS HANDLING • SHEET METAL WORK • CUTTING APPLICATIONS

## Flex-Armor™

### Dyneema® Gloves

*Flexibility. Agility. Cut Resistance.*

Rugged Dyneema® high-density polyethylene fiber is 10 times stronger than steel and 40% stronger than blended fabrics. The high level of protection doesn't come at the expense of breathability or flexibility. Available with a nitrile coating, for added chemical resistance, or a polyurethane coating for antistatic jobs.

- Seamless knit shell.
- Color-coded hem.
- Machine washable.
- Silicone free.
- Sizes S-XXL.

## Nitrile Coated

### ▲ Style 725GDBN

Gray Dyneema® shell with black nitrile coating.

### ▲ Style 725WDBN

White Dyneema® shell with black nitrile coating.

## Polyurethane Coated

### ▲ Style 720DGU

Gray Dyneema® shell with gray polyurethane coating.

### ▲ Style 720DWU

Gray Dyneema® shell with white polyurethane coating.

## EN Specifications

- Abrasion Resistance: Level 4 (8000 Cycles)
- Blade-Cut Resistance: Level 3 (Index Min. 8.0)
- Tear Resistance: Level 4 (75N)
- Puncture Resistance: Level 2 (Min. 60N)



**Style 725GDBN • Sizes S-XXL**  
Nitrile Coated



**Style 725WDBN • Sizes S-XXL**  
Nitrile Coated



**Style 720DGU • Sizes S-XXL**  
Polyurethane Coated



**Style 720DWU • Sizes S-XXL**  
Polyurethane Coated



# palm-coated knit - abrasion-resistant

• BOTTLING AND CANNING • RECYCLING • MANUFACTURING • ASSEMBLY

	 <div data-bbox="950 346 1079 472">Acrylic Lining</div>
<p><b>Style 700SLC • Sizes S-XL</b> Latex Coated</p>	<p><b>Style 700TSLC • Size Men's Large</b> Latex Coated</p>
	 <div data-bbox="560 777 673 892">  </div>
<p><b>Style HVG700SLC • Sizes S-XL</b> Latex Coated</p>	<p><b>Style HVO700SLC • Sizes S-XL</b> Latex Coated</p>
 <div data-bbox="154 1165 284 1291">  </div>	
<p><b>Style 708SLC • Sizes Men's and Women's</b> Blue Latex Coated</p>	<p><b>Style 713SNF • Sizes XS-XXL</b> Foam Nitrile Coated</p>
	
<p><b>Style 713SNC • Sizes 7-10</b> Nitrile Coated</p>	<p><b>Style 713SUC • Sizes S-XL</b> Polyurethane Coated</p>

## Palm-Coated Knit Gloves

A seamless knit shell with a latex, nitrile or polyurethane coating provides moderate cut and excellent abrasion resistance, and a high level of dexterity. Palm coating protects and enhances grip even in wet, greasy or oily conditions.

- Color-coded hem.
- Contoured fit.
- Machine washable.
- Knit wrist.

## Latex Coated

### ▲ Style 700SLC

Gray cotton/polyester 10-cut knit liner. Heavy latex with textured palms and fingers. Sizes: S-XL.

### ▲ Style 700TSLC - Thermal

Warm 100% heavyweight knitted acrylic with textured latex. Size: Men's Large.

### ▲ Style HVG700SLC - Lime

### ▲ Style HVO700SLC - Orange

High-visibility cotton/polyester 10-cut knit liner with black latex. Sizes: S-XL.



### ▲ Style 708SLC - Blue

### ▲ Style 708SLCE - Red

Economical white cotton/polyester 7-cut knit liner with a light latex. Sizes: Men's and Women's.

## Nitrile Coated

### ▲ Style 713SNF

High-dexterity foam nitrile on a gray nylon knit shell. Excellent grip. Sizes: XS-XXL.

### ▲ Style 713SNC

Standard gray nitrile on a white nylon knit shell. Sizes: 7-10.

## Polyurethane Coated

### ▲ Style 713SUC

White nylon shell with polyurethane for enhanced tactile sensitivity. Sizes: S-XL.

# string knits - PVC dotted/coated

- MANUFACTURING • GENERAL LABOR • MATERIAL HANDLING
- SHIPPING/RECEIVING • AGRICULTURE

## PVC-Dotted/Coated String Knit Gloves

A comfortable medium weight cotton/polyester knit glove with PVC dots or a PVC palm coating provides general-duty protection and enhanced gripping ability.

- Ideal for material handlers.
- Knit wrist.
- Men's and Women's sizes.

## PVC Dotted

- ▲ **Style K708SKBS - Men's**
- ▲ **Style K708SKBSL - Women's**  
Premium natural white string knit with PVC dots on both sides.
- ▲ **Style 708SKBS - Men's**
- ▲ **Style 708SKBSL - Women's**
- ▲ **Style 708SKBSY - Youth**  
Natural white string knit with PVC dots on both sides.
- ▲ **Style 708SKBSG - Men's**
- ▲ **Style 708SKBSLG - Women's**  
Gray string knit with PVC dots on both sides.
- ▲ **Style K708SK - Men's**
- ▲ **Style K708SKL - Women's**  
Premium natural white string knit with PVC dots on one side.
- ▲ **Style 708SK - Men's**
- ▲ **Style 708SKL - Women's**  
Natural white string knit with PVC dots on one side.

## PVC Dotted - Fingerless

- ▲ **Style K708SKBSF - Men's**
- ▲ **Style K708SKBSFL - Women's**  
Natural white string knit with PVC dots on both sides.

## PVC Palm Coated

- ▲ **Style K708SPC - Men's**
- ▲ **Style K708SPCL - Women's**  
Natural white string knit with full brown PVC coating on palm and fingers.



**Style 708SKBS** • Sizes Men's, Women's and Youth • Dotted on Two Sides



**Style 708SKBSG** • Sizes Men's and Women's • Dotted on Two Sides



**Style 708SK** • Sizes Men's and Women's  
Dotted on One Side



**Style K708SKBSF** • Sizes Men's and Women's • Dotted on Two Sides



**Style K708SPC** • Sizes Men's and Women's • Palm Coat



# PVC dotted/coated - string knits

• MANUFACTURING • GENERAL LABOR • MATERIAL HANDLING  
• SHIPPING/RECEIVING • AGRICULTURE



**Style HVG708SKBS • Size Men's**  
PVC Dotted

**Style HVO708SKBS • Size Men's**  
PVC Dotted



**Style 708SKH • Sizes S-XL**  
Crisscross Grip



**Style K708SKHW • Sizes S-XL**  
Honeycomb Grip



**Style KB710SBS • Sizes Men's and**  
Women's • PVC Blocks

## PVC-Dotted/Coated String Knit Gloves

Medium weight string knit gloves have several PVC pattern configurations, which cover both sides of the gloves, to provide enhanced grip, added protection, and extended wear in general-duty applications.

- Hi-vis styles for low-light or nighttime use.
- Reversible.

▲ **Style HVG708SKBS - Hi-Vis Lime**

▲ **Style HVO708SKBS - Hi-Vis Orange**

Fluorescent cotton/polyester blend knit glove with black PVC dots on both sides. Size: Men's.



▲ **Style 708SKH**

Orange polyester string knit with an orange PVC crisscross grip pattern. Sizes: S-XL.

▲ **Style K708SKHW**

White cotton/polyester blend knit with a black PVC honeycomb grip pattern. Sizes: S-XL.

▲ **Style KB710SBS - Men's**

▲ **Style KB710BSL - Women's**

Premium white cotton/polyester blend knit with blue PVC block pattern.

▲ **Style B710SBS - Men's**

▲ **Style B710BSL - Women's**

White cotton/polyester blend knit with blue PVC block pattern.

# string knits

- MANUFACTURING • GENERAL LABOR • MATERIAL HANDLING
- SHIPPING/RECEIVING • AGRICULTURE

## Seamless String Knit Gloves

A cool and comfortable layer of protection ideal for use as a glove liner. 13, 10 or 7 "cut" references the number of rows of stitches per inch. A higher cut means a less bulky glove and greater dexterity. Fabric weights range from light to heavy.

- Overcast edging.
- Knit wrist, color-coded hem.
- Men's and Women's sizes.

## Natural White String Knit

7-Cut Cotton/Polyester

▲ Style 706S - Lightweight

▲ Style 708S\* - Standard

▲ Style K708S30\* - Premium Standard

▲ Style 710S - Medium

▲ Style 712S - Heavyweight

▲ Style 714S - Extra Heavyweight

Fingerless

▲ Style K708SF - Premium Standard

10-Cut Cotton/Polyester

▲ Style K7100S\* - Premium Standard

## Gray String Knit

7-Cut Cotton/Polyester

▲ Style 708SG - Standard

▲ Style 710SG - Medium

▲ Style 712SG - Heavyweight

▲ Style 714SG - Extra Heavyweight

## Bleached White String Knit

7-Cut Cotton/Polyester

▲ Style K710SBW - Medium

▲ Style P708S - Standard

60% Poly/40% Cotton

13-Cut 100% Nylon

▲ Style 713SN† - Standard

13-Cut Cotton/Polyester

▲ Style K713S - Premium

\* Youth size also available.

† Women's Small and Youth size also available.



**Style 708S** • Sizes Men's, Women's and Youth • 7 Cut



**Style K7100S** • Sizes Men's, Women's and Youth • 10 Cut



**Style 712SG** • Sizes Men's and Women's  
7 Cut



**Style K710SBW** • Sizes Men's and Women's • 7 Cut



**Style 713SN** • Sizes Men's, Women's, Women's Small and Youth • 13 Cut



# canvas - cotton

- MANUFACTURING • GENERAL LABOR • MATERIAL HANDLING
- SHIPPING/RECEIVING • AGRICULTURE

	
<b>Style K211</b> • Sizes Men's L-XL Knit Wrist	<b>Style 708R</b> • Size Men's Knit Wrist
	
<b>Style B011</b> • Sizes Men's L-XL, Women's Band Top	<b>Style B01CEI</b> • Size Men's Band Top
	
<b>Style 708BT</b> • Size Men's Band Top	<b>Style GS211</b> • Size Men's Gauntlet Cuff

## General-Purpose Cotton Canvas Gloves

Comfortable work gloves for protection in light-duty applications.

- Clute cut.
- Men's, Women's and XL sizes.

### Knit Wrist

#### Premium 100% Cotton

- ▲ Style K8I - 8 oz. Men's
- ▲ Style K8LI - 8 oz. Women's
- ▲ Style K01I - 10 oz. Men's
- ▲ Style K01JI - 10 oz. Men's XL
- ▲ Style K21I - 12 oz. Men's
- ▲ Style K21JI - 12 oz. Men's XL

#### Standard Weight Cotton

- ▲ Style 708 - Men's
- ▲ Style 708L - Women's

#### 100% Cotton

- ▲ Style 708C - 8 oz. Men's
- ▲ Style 708LC - 8 oz. Women's

#### Poly/Cotton

- ▲ Style 708K - 8 oz. Men's
- ▲ Style 708LK - 8 oz. Women's
- ▲ Style 710K - 10 oz. Men's
- ▲ Style 712K - 12 oz. Men's

#### Reversible Poly/Cotton

- ▲ Style 708R - 8 oz. Men's

### Band Top

#### Premium 100% Cotton

- ▲ Style B01I - 10 oz. Men's
- ▲ Style B01JI - 10 oz. Men's XL
- ▲ Style B01LI - 10 oz. Women's

- ▲ Style B01CEI - 10 oz. Men's  
White corduroy with elastic back.

#### Standard Cotton

- ▲ Style 708BT - 8 oz. Men's

### Gauntlet Cuff

#### Premium 100% Cotton

- ▲ Style GS21I - Men's  
12 oz. with standard lining.

#### Standard Weight Cotton

- ▲ Style 708G - 8 oz. Men's

# cotton - dotted canvas

- MANUFACTURING • GENERAL LABOR • MATERIAL HANDLING • SHIPPING/RECEIVING
- AGRICULTURE • CLEANING • LANDSCAPING

## General-Purpose Dotted Cotton Canvas Gloves

Provide hand protection while offering finger dexterity and excellent grip.

- PVC dots on palm, thumb and index finger.
- Clute pattern.

### Knit Wrist

#### Poly/Cotton

- ▲ **Style 780K - Men's**
- ▲ **Style 780LK - Women's**  
8-oz. canvas with black PVC dots.

#### Premium Cotton

- ▲ **Style K01PDI - Men's**
- ▲ **Style K01PDJI - Men's XL**  
10-oz. cotton canvas with black PVC dots.
- ▲ **Style SOK01PDI - Men's**
- ▲ **Style SOK01PDLI - Women's**  
10-oz. cotton canvas with orange PVC dots.

### Band Top

- ▲ **Style B01PDI - Men's Only**  
Premium 10-oz. cotton canvas with black PVC dots.
- ▲ **Style 219 - Women's Only**  
Standard cotton canvas. Floral pattern gardening glove with green PVC dots. Elastic back.

### Cotton Weights

The term "eight-ounce" cotton canvas means that a square yard of the fabric weighs eight ounces. For exact glove weights please contact your West Chester Holdings Key Account Manager.



**Style 780K • Sizes Men's and Women's  
Knit Wrist**



**Style SOK01PDI • Sizes Men's L-XL  
Knit Wrist**



**Style B01PDI • Size Men's  
Band Top**



**Style 219 • Size Women's  
Band Top**



# jersey - cotton

- MANUFACTURING • GENERAL LABOR • MATERIAL HANDLING • SHIPPING/RECEIVING
- AGRICULTURE • CLEANING • LANDSCAPING



**Style KJ55I** • Sizes Men's and Women's  
5.5-oz. Cotton



**Style 750R** • Sizes Men's and Women's  
Poly/Cotton



**Style 750** • Sizes Men's and Women's  
Standard Weight



**Style 755C** • Size Men's  
Cotton Fleece Lined



**Style KBJ9PDI** • Sizes Men's and  
Women's • 10-oz. Cotton

## General-Duty Jersey Gloves

Soft, comfortable Jersey Gloves come in a variety of weights for general-duty and light abrasion applications.

- Knit wrist or slip-on.
- Clute, gunn or reversible.
- Men's and Women's size.

## Premium Reversible Natural Jersey

100% Cotton - Knit Wrist

- ▲ Style KJ21I - 12 oz.
- ▲ Style KJ01I - 10.5 oz.
- ▲ Style KJ8I - 7 oz.
- ▲ Style KJ55I - 5.5 oz.

Poly/Cotton Blend - Knit Wrist

- ▲ Style KJ55PI - 5.5 oz.
- Men's size only.

## Brown Jersey

- ▲ Style KBJ9I - Knit Wrist  
Premium 10-oz. 100% cotton.  
Clute cut.

- ▲ Style 750C - Knit Wrist  
Standard weight 100% cotton.  
Clute cut.

- ▲ Style 750R - Knit Wrist  
Two-piece poly/cotton. Reversible.

- ▲ Style 750 - Knit Wrist  
Standard weight poly/cotton.  
Clute cut.

- ▲ Style 755C - Slip-On  
100% cotton with red 100% cotton  
fleece lining. Gunn cut. Men's  
size only.

## Brown Jersey with Plastic Dots

- ▲ Style KBJ9PDI - Knit Wrist  
Premium 10-oz. poly/cotton with  
dotted palm and index finger for  
added grip.

- ▲ Style 750PD - Knit Wrist  
Standard poly/cotton with  
dotted palm and index finger for  
added grip.

# cotton - chore

- GENERAL LABOR • MASONRY • LANDSCAPING • MATERIAL HANDLING
- MANUFACTURING • AUTOMOTIVE • AGRICULTURE

## Premium and Standard Chore Gloves

A 100% cotton shell provides the protection needed for general-purpose or light-duty jobs. Lining offers comfort and good heat dispersion.

- Soft lining.
- Clute cut, straight thumb.
- Size Men's Large.

## Full Chore

### Knit Wrist Style

Gold chore with gold cuff.

▲ Style KB51SI - Rayon Lined

Gold chore with navy cuff.

▲ Style FM18KWC - 100% Cotton Lined

▲ Style FM18KWK - 100% Cotton Shell, Standard Lined

▲ Style FM18KW - Standard Lined  
Made from a cotton/polyester blend.

Green chore with dark green cuff.

▲ Style KG22SI - Rayon Lined

▲ Style FM18KWG - Standard Lined

### Band Top Style

▲ Style FM18BT - Standard Lined  
Gold with a natural white band top.

## Canvas Back Chore

### Band Top Style

▲ Style BWB51SI - Rayon Lined

▲ Style M18BT - Standard Lined  
Medium weight canvas back with band top. Gold.

### Knit Wrist Style

▲ Style KWB51SI - Rayon Lined

▲ Style M18KW - Standard Lined  
Canvas back with a knit wrist. Gold.

### Gauntlet Cuff Style

▲ Style GWB51SEI - Rayon Lined/Elastic Back

▲ Style GWB51SI - Rayon Lined

▲ Style M18G - Standard Lined  
Medium weight canvas back with a gauntlet cuff. Gold.



Style KB51SI • Size Men's Large  
Knit Wrist



Style KG22SI • Size Men's Large  
Knit Wrist



Style FM18BT • Size Men's Large  
Band Top



Style M18BT • Size Men's Large  
Band Top



Style GWB51SEI • Size Men's Large  
Waterproof Gauntlet Cuff






Style M18G • Size Men's Large  
Gauntlet Cuff



# double palm - cotton

- GENERAL LABOR • MASONRY • LANDSCAPING • MATERIAL HANDLING
- MANUFACTURING • AUTOMOTIVE • AGRICULTURE

 <p>Nap In</p>	 <p>Nap In</p>
<p><b>Style G81SNI • Size Men's Large</b> Starched Gauntlet Cuff</p>	<p><b>Style 790NIBT • Size Men's Large</b> Band Top</p>
	
<p>Nap In</p>	<p>Nap Out</p>
 <p>Nap Out</p>	 <p>Nap Out</p>
<p><b>Style 718NO • Size Men's Large</b> Knit Wrist</p>	<p><b>Style 718G • Size Men's Large</b> Starched Gauntlet Cuff</p>

## Quilted Cotton Double-Palm Gloves

Made from two-ply, medium weight "nap in" or "nap out" 100% cotton shell. Extra fabric in the palm extends wear.

- Clute cut.
- Natural white.
- Size Men's Large.

### ▲ Style G81SNI - Nap In

### ▲ Style G81SI - Nap Out

Medium weight cotton outer with rayon lining. Knuckle strap. Starched gauntlet cuff.

### ▲ Style 790NIBT - Nap In

### ▲ Style 718BT - Nap Out

Medium weight cotton with a band top.

### ▲ Style 790NI - Nap In

### ▲ Style 718NO - Nap Out

Medium weight cotton with a knit wrist.

### ▲ Style 718G - Nap Out

Medium weight cotton with a gauntlet cuff.

## Nap In and Nap Out

Napping is the pulling up of fibers from the base weave, which results in a raised fuzzy surface. This surface faces inward in nap in gloves and outward on nap out gloves. Nap in fabric provides greater abrasion resistance and outwears nap out fabric. Nap out fabric provides greater heat protection.

# cotton - double palm

- AGRICULTURE • GENERAL LABOR • MATERIAL HANDLING • AUTOMOTIVE
- GLASS/PLASTICS MANUFACTURING • FOUNDRY OPERATIONS

## Cotton Corduroy Double-Palm Gloves

Premium cotton canvas for comfortable general-purpose protection. Corduroy exterior resists oil and dirt. High-visibility styles are ideal for nighttime use or for working in low-light conditions.

- Standard lining.
- Knit wrist.
- Clute cut.

▲ **Style K81SCNI - Men's**  
Medium weight natural white cotton with natural white poly/cotton corduroy on palm and fingers. Nap in.

▲ **Style K81SCNCI - White Wrist**  
▲ **Style K81SCNCRI - Red Wrist**  
Medium weight natural white cotton, fully corded.  
Size: Men's Large.

## Premium High-Visibility

▲ **Style K81CNCGR1 - Green**  
▲ **Style K81CNCYWI - Yellow**  
▲ **Style K81CNCORI - Orange**  
100% cotton. Medium weight, fully corded.  
Size: Men's Large.

▲ **Style K81SCNCGR1 - Green**  
▲ **Style K81SCNCYWI - Yellow**  
▲ **Style K81SCNCORI - Orange**  
Medium weight poly/cotton, fully corded. Size: Men's Large.

▲ **Style K81SCNCGRIPD - Green**  
▲ **Style K81SCNCYWIPD - Yellow**  
▲ **Style K81SCNCORIPD - Orange**  
PVC-dotted palm for added grip. Medium weight, fully corded.  
Size: Men's Large.



**Style K81SCNI • Sizes Men's and Women's**



**Style K81SCNCI • Size Men's**



**Styles K81SCNCYWI, K81SCNCORI and K81SCNCGR1 • Size Men's**



**Style K81SCNCGRIPD • Size Men's**



**Style K81SCNCORIPD • Size Men's**



# double palm/terry - cotton

- AGRICULTURE • GENERAL LABOR • MATERIAL HANDLING • AUTOMOTIVE
- GLASS/PLASTICS MANUFACTURING • FOUNDRY OPERATIONS



**Style K81SNI • Sizes Men's and Women's**



**Style K81SPNJRI • Size Men's XL**



**Style T24KW • Sizes Men's and Women's**



**Style 2514NT • 14" Long**



**Style 2530 • 3" x 50 Yds**

## Cotton Double-Palm Gloves, Terrycloth Gloves and Sleeves

Comfortable premium cotton canvas gloves are ideal for general-purpose protection. Terrycloth Gloves provide moderate thermal protection and cut resistance.

- Knit wrist.
- Clute cut.

### Premium Cotton

- ▲ **Style K81SNI - Men's**
- ▲ **Style K81SNJI - Men's XL**
- ▲ **Style K81SNJILHO - Left Hand**
- ▲ **Style K81SNJIRHO - Right Hand**  
Medium weight 100% cotton shell. Natural white canvas. Standard lining. Nap in.
- ▲ **Style K61SNLI - Women's**  
Lightweight natural white canvas. Standard lining. Nap in.
- ▲ **Style K81SPNJRI - Men's XL**  
Medium weight poly/cotton shell. Natural white canvas. Red knit wrist. Standard lining. Nap in.

### Cotton Terrycloth

- ▲ **Style T24KW - Men's**
- ▲ **Style T24KWL - Women's**  
100% cotton natural white terrycloth. Loop out.

### Cotton Sleeves

Provide forearm and wrist protection. Comfortable cotton knit fits snugly around the arm.

- ▲ **Style 2514NT**  
Single-ply cotton with thumb slot. 14" long.
- ▲ **Style 2530 - Tubing Roll**  
3" x 50 yard roll can be cut into sleeves of any desired length.

# cotton - hot mills

- GLASS/PLASTICS MANUFACTURING • FOUNDRY OPERATIONS • STEEL MILLS
- AUTOMOTIVE

## Cotton Hot Mill Gloves

Rugged protection during extended exposure to moderate heat. Multiple layers guard against heat, abrasion and wear.

- Nap out or nap in styles.
- Natural white or green.
- Clute design.
- 100% cotton outer shell.

### Gauntlet Cuff

- ▲ **Style G03SI - Extra Heavyweight**  
Premium. Two-ply rayon lining. Nap out. Size: Men's Large.
- ▲ **Style 7900BLG - Heavyweight**  
Burlap lining. Nap out. Size: Men's Large.
- ▲ **Style 7900G - Regular Weight**  
Nap out. Size: Men's Large.

### Band Top

- ▲ **Style BG42SWSJI - Regular Weight**  
Green palm and forefinger. Nap out. Size: Men's XL.
- ▲ **Style 7924GR - Regular Weight**  
Green palm and forefinger. Nap out. Size: Men's Large.
- ▲ **Style B03SI - Extra Heavyweight**  
Premium. Two layers of rayon lining. Nap out. Size: Men's Large.
- ▲ **Style B02SI - Regular Weight**  
Premium. Rayon lining. Nap out. Sizes: Men's and Women's.
- ▲ **Style B02SNI - Regular Weight**  
Premium. Rayon lining. Nap in. Sizes: Men's and Women's.
- ▲ **Style 7930 - Extra Heavyweight**  
Nap out. Size: Men's Large.
- ▲ **Style 7900BL - Heavyweight**  
Burlap lining. Nap out. Size: Men's Large.
- ▲ **Style 7900K - Regular Weight**
- ▲ **Style 790K - Medium Weight**  
Nap out. Size: Men's Large.
- ▲ **Style 7900C - Regular Weight**  
100% cotton shell and lining. Nap out. Size: Men's Large.

	 <p>Style 7900BLG Burlap Lining</p>
<p><b>Style G03SI • Size Men's Large</b> Rubberized Gauntlet Cuff • Knuckle Strap</p>	<p><b>Style 7900G • Size Men's Large</b> Gauntlet Cuff • Knuckle Strap</p>
	
<p><b>Style BG42SWSJI • Size Men's XL</b> Band Top</p>	<p><b>Style 7924GR • Size Men's Large</b> Band Top • Knuckle Strap</p>
 <p>Style B02SNI Nap In</p>	 <p>Style 7900BL Burlap Lining</p>
<p><b>Style B03SI • Size Men's Large</b> Band Top • Knuckle Strap</p>	<p><b>Style 7900K • Size Men's Large</b> Band Top • Knuckle Strap</p>





**Style 705** • Sizes Men's L-XL and Women's • 100% Cotton



**Style 805** • Sizes Men's L-XL and Women's • 100% Cotton



**Style 915L** • Sizes Men's and Women's • Nylon



**Style 905** • Sizes Men's L-XL and Women's • Nylon

## Cotton and Nylon Inspector's Gloves

Protect sensitive equipment and products from hand oils, fingerprints and abrasion.

- Snug fit for excellent dexterity.
- Effective as a glove liner.
- Reversible.
- White.

## 100% Cotton Lisle

- ▲ **Style 705** - Men's
- ▲ **Style 705/XL** - Men's XL
- ▲ **Style 705L** - Women's  
Regular weight. Unhemmed.
- ▲ **Style 705-14** - 14" Long  
Regular weight extended length. Unhemmed.
- ▲ **Style 805/L** - Men's
- ▲ **Style 805/XL** - Men's XL
- ▲ **Style 805L** - Women's  
Heavyweight. Unhemmed.

## Stretch Nylon

Comfortable and form fitting with color-coded hems for easy size identification.

- ▲ **Style 915/L** - Men's
- ▲ **Style 916/M** - Women's  
Lightweight.
- ▲ **Style 905/L** - Men's
- ▲ **Style 905/XL** - Men's XL
- ▲ **Style 906/M** - Women's  
Regular weight.

# coated - vinyl

• GENERAL LABOR • MANUFACTURING • ASSEMBLY • MAINTENANCE

## Vinyl-Coated Gloves

A vinyl exterior provides moderate abrasion resistance and has a textured finish that enhances grip. Choose a soft jersey lining for cushioning and moderate warmth or an interlock lining, which wicks away moisture and keeps hands cool and dry.

- Outwears light-duty cotton and leather.
- Snug fit.
- Liquid repellent but not chemical resistant.

### Yellow Vinyl

#### ▲ Style 3115 - Seams Out

Exterior seams enhance comfort by allowing just the soft jersey lining to touch the skin.

- Reinforced thumb for added durability.
- Slip-on.
- Sizes: S-XL.

#### ▲ Style 3962 - Jersey Lining

Slip-on. Sizes: S-XL.

#### ▲ Style 3962I - Interlock Lining

Slip-on. Sizes: S-XL.

### Vinyl Clute Cut

#### ▲ Style 220 - Men's

Band top. Blue.

#### ▲ Style 221 - Women's

Band top. Yellow.



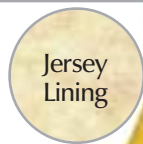
Reinforced  
Thumb  
Crotch



Jersey  
Lining



**Style 3115 • Sizes S-XL**  
Jersey Lining



Jersey  
Lining



**Style 3962 • Sizes S-XL**  
Jersey Lining



Interlock  
Lining



**Style 3962I • Sizes S-XL**  
Interlock Lining



**Style 220 • Size Men's**  
Band Top



**Style 221 • Size Women's**  
Band Top



# vinyl/nitrile - coated

• GENERAL LABOR • MANUFACTURING • ASSEMBLY • MAINTENANCE

	
<b>Style 201 • Sizes Men's M-L</b> Vinyl Impregnated	<b>Style 201BT/XL • Size Men's XL</b> Vinyl Impregnated
	
<b>Style 203 • Sizes Men's M-L</b> Vinyl Impregnated	<b>Style 205 • Size Men's</b> Vinyl Impregnated
	
<b>Style PF105 • Sizes Men's M-XL</b> Nitrile Impregnated	<b>Style 2000 • Sizes Men's M-XL</b> Nitrile Impregnated

## Vinyl and Nitrile Impregnated/Laminated Gloves

Comfort, flexibility and dexterity. Ideal for light-duty assembly and handling small parts.

### Vinyl Impregnated

Choose from extremely flexible stretch vinyl or non-stretch vinyl impregnated with PVC.

### Stretch Vinyl Impregnated

▲ **Style 201 - Men's M-XL**

▲ **Style 202 - Women's S-L**  
Slip-on. Russet.

▲ **Style 201BT/XL - Men's XL**  
Band top. Russet.

### Non-Stretch Vinyl Impregnated

▲ **Style 203 - Men's M-L**

▲ **Style 204 - Women's M-L**  
Slip-on. Yellow.

▲ **Style 205 - Men's**  
Vinyl palm with canvas back.  
Knit wrist.

### Nitrile Impregnated/Laminated

Nitrile over a cotton lining for excellent abrasion, cut and puncture resistance with good dexterity.

• Smooth finish.

### Solid Back

▲ **Style 105 - Men's M-XL**

▲ **Style 106 - Women's S-L**  
Slip-on.

### Perforated Back

▲ **Style PF105 - Men's M-XL**

▲ **Style PF106 - Women's S-L**  
Perforated back for ventilation.  
Slip-on.

### Nitrile Laminated

▲ **Style 2000 - Driver's**

An alternative to leather. Nitrile palm coating with a canvas back. Jersey lining. Gunn cut. Sizes: S-XL.

# chemical - PVC coated

- MAINTENANCE • AUTO INDUSTRY • REFINING • MINING AND UTILITIES
- HANDLING GREASE, OILS, ACIDS, CAUSTICS AND ALCOHOL

## PVC-Coated Gloves

The PVC exterior is chemically resistant to oil, grease, acids and solvents, and it provides moderate abrasion resistance. A jersey or interlock lining enhances comfort.

- Rough grip finish.
- Gauntlet or knit wrist.
- Men's size.

### Jersey Lining

Soft jersey lining offers cushioning and moderate insulation.

Premium, Black

- ▲ Style PJ1017RF - 10"
- ▲ Style PJ1027RF - 12"
- ▲ Style PJ1047RF - 14"

Standard, Black

- ▲ Style J1017RF - 10"
- ▲ Style J1027RF - 12"
- ▲ Style J1047RF - 14"
- ▲ Style J1087RF - 18"
- ▲ Style J1007RF - Knit Wrist

**POSIGRIP**

Standard, Green

- ▲ Style J1217RF - 10"
- ▲ Style J1227RF - 12"
- ▲ Style J1247RF - 14"
- ▲ Style J1207RF - Knit Wrist, Men's
- ▲ Style J1207RFL - Knit Wrist, Women's

### Interlock Lining

Cotton knit interlock lining wicks away moisture and keeps hands cool and dry.

Standard, Black

- ▲ Style 1017RF - 10"
- ▲ Style 1027RF - 12"
- ▲ Style 1047RF - 14"
- ▲ Style 1087RF - 18"
- ▲ Style 1007RF - Knit Wrist, Men's
- ▲ Style 1007RFL - Knit Wrist, Women's

 	 
<b>Style J1017RF • Size Men's</b> <b>10" Length • Rough Grip</b>	<b>Style J1027RF • Size Men's</b> <b>12" Length • Rough Grip</b>
 	 
<b>Style J1047RF • Size Men's</b> <b>14" Length • Rough Grip</b>	<b>Style J1007RF • Size Men's</b> <b>Knit Wrist • Rough Grip</b>
 	 
<b>Style J1227RF • Size Men's</b> <b>12" Length • Rough Grip</b>	<b>Style 1027RF • Size Men's</b> <b>12" Length • Rough Grip</b>

To determine the best gloves for your application consult our "Guide to Chemical Resistance" chart located at [www.west-chester.net](http://www.west-chester.net)

**Rough Grip Finish**



# PVC coated - chemical

- MAINTENANCE • AUTO INDUSTRY • REFINING • MINING AND UTILITIES
- HANDLING GREASE, OILS, ACIDS, CAUSTICS AND ALCOHOL

 	 
<b>Style J212 • Size Men's 12" Length • Acid Grip</b>	<b>Style J207 • Size Men's Knit Wrist • Acid Grip</b>
 	 
<b>Style 1027R • Size Men's 12" Length • Semi-Rough Grip</b>	<b>Style 1007R • Size Men's 12" Length • Smooth Grip</b>
 	 
<b>Style 1027 • Size Men's 12" Length • Smooth Grip</b>	<b>Style J1327 • Sizes L-2XL 10.5" Length • Rough Grip</b>



Acid Grip Finish



Semi-Rough  
Grip Finish



Smooth Finish

## PVC-Coated Gloves

Several grip finish options ensure good gripping ability in wet or oily conditions. PVC exterior resists oil, grease, acids and solvents, and also provides moderate abrasion resistance.

- Slip-on or knit wrist.
- Men's size.

## Standard PVC Coating

Acid Grip, Jersey Lining

- ▲ Style J210 - 10"
- ▲ Style J212 - 12"
- ▲ Style J214 - 14"
- ▲ Style J207 - Knit Wrist

Semi-Rough Grip, Interlock Lining

- ▲ Style 1017R - 10"
- ▲ Style 1027R - 12"
- ▲ Style 1047R - 14"
- ▲ Style 1007R - Knit Wrist

Smooth Grip, Interlock Lining

- ▲ Style 1017 - 10"
- ▲ Style 1027 - 12" Men's
- ▲ Style 1027L - 12" Women's
- ▲ Style 1047 - 14"
- ▲ Style 1087 - 18"
- ▲ Style 1007 - Knit Wrist, Men's
- ▲ Style 1007L - Knit Wrist, Women's

## Triple-Dipped PVC

▲ Style J1327

Added protection against aggressive chemicals. Excellent abrasion, cut and puncture resistance.

- Interlock lining.
- Smooth finish cuff with rough finish on palm and back.
- 10.5" length.
- Sizes: Men's L-2XL.

# chemical - PVC coated

- JANITORIAL • MAINTENANCE • REFINING • FISHING • PETROCHEMICALS
- MINING AND UTILITIES

## Yellow PVC-Coated Gloves

Yellow PVC on a comfortable jersey lining, which offers moderate insulation, or an interlock lining, which wicks away perspiration. Choose a smooth finish for good grip in dry conditions or a semi-rough finish, which enhances grip in wet or oily conditions.

- Light-duty protection from water, oil and grease.
- Abrasion resistant.
- Men's size.

### Gauntlet

- ▲ **Style 1027Y** - 12"  
Smooth finish. Interlock lining.
- ▲ **Style 1047Y** - 14"  
Smooth finish. Jersey lining.
- ▲ **Style J1027Y** - 12"  
Smooth finish. Jersey lining.
- ▲ **Style J1027RY** - 12"  
Semi-rough finish. Jersey lining.

### Band Top

- ▲ **Style J1017YBT**  
Smooth finish. Jersey lining.

### Knit Wrist

- ▲ **Style 1007OBY**  
Open back. Smooth finish.  
Jersey lining.
- ▲ **Style 1007RY**  
Fully coated. Semi-rough grip finish.  
Interlock lining.



**Style 1027Y** • Size Men's  
12" Length



**Style J1027RY** • Size Men's  
12" Length



**Style J1017YBT** • Size Men's  
Band Top



**Style 1007OBY** • Size Men's  
Knit Wrist



**Style 1007RY** • Size Men's  
Knit Wrist



# PVC coated - chemical

• JANITORIAL • MAINTENANCE • REFINING • FISHING • PETROCHEMICALS  
• MINING AND UTILITIES

 <p>Foam Lining</p>	 <p>Rough Grip</p>
<p><b>Style 1017OR • Size Men's Safety Cuff</b></p>	<p><b>Style 1017ORF • Size Men's Safety Cuff</b></p>
	 <p>Rough Grip</p>
<p><b>Style 1027OR • Size Men's 12" Length</b></p>	<p><b>Style 1027ORF • Size Men's 12" Length</b></p>
 <p>Rough Grip</p>	 <p>Rough Grip</p>
<p><b>Style 1007ORF • Size Men's Knit Wrist</b></p>	<p><b>Style 1007ORV • Size S-XL Knit Wrist</b></p>

## Safety Orange PVC-Coated Gloves

PVC protects against chemicals, oils and greases, while a foam over jersey lining keeps hands warm in adverse weather conditions. Choose a smooth finish for excellent grip in dry conditions, or a rough finish for good grip in wet or oily conditions.

- Chemical and abrasion resistant.
- Bright orange PVC coating.

## Safety Cuff

▲ **Style 1017OR - Smooth Finish**

▲ **Style 1017ORF - Rough Finish**

Natural white rubberized safety cuff.  
Size: Men's.

## Gauntlet

▲ **Style 1027OR - Smooth Finish**

▲ **Style 1027ORF - Rough Finish**

12" length. Size: Men's.

## Knit Wrist

▲ **Style 1007OR - Smooth Finish**

▲ **Style 1007ORF - Rough Finish**

Brown knit wrist. Size: Men's

▲ **Style 1007ORV - Miner's**

A gel padded back metacarpal liner from the fingertips to the wrist provides impact protection. Does not have a foam lining.

- Rough finish.
- Sizes: S-XL.

# chemical - nitrile coated

• METAL HANDLING • GENERAL LABOR • MAINTENANCE

## Nitrile-Coated Gloves

The nitrile coating provides excellent abrasion, cut and snag resistance. Choose smooth finish for good dry grip or rough finish for enhanced gripping ability in wet or oily conditions.

- Jersey or interlock lining.
- Fully or palm coated.

### Knit Wrist

#### Heavyweight Nitrile Coated

##### ▲ Style 4000 - Fully Coated

##### ▲ Style 4050 - Palm Coated

Rugged protection when handling extremely abrasive surfaces. Jersey lining. Smooth finish. Sizes: S-XL.

#### Lightweight Nitrile Coated

##### ▲ Style 4060 - Palm Coated

For light-duty tasks requiring minor abrasion and snag resistance. Replaces cotton canvas. Interlock lining. Smooth finish. Sizes: S-XL.

### Safety Cuff

#### Heavyweight Nitrile Palm Coated

##### ▲ Style 4550 - Smooth Finish

For handling extremely abrasive surfaces. Jersey lining. Smooth finish. Sizes: S-XL.

#### Heavyweight Nitrile Fully Coated

##### ▲ Style 4550FC - Smooth Finish

##### ▲ Style 4550RFFC - Rough Finish

A high level of protection when handling extremely abrasive surfaces. Jersey lining. Size: Men's.



Style 4000 • Sizes S-XL  
Knit Wrist



Style 4050 • Sizes S-XL  
Knit Wrist



Style 4550 • Sizes S-XL  
Safety Cuff



Style 4550FC • Size Men's  
Safety Cuff



Style 4550RFFC • Size Men's  
Safety Cuff



# neoprene/latex/nitrile - chemical

• FOOD SERVICE • JANITORIAL • HAZARDOUS CLEANUP • CHEMICAL HANDLING

	
<p><b>Style J4007 • Size Men's Knit Wrist</b></p>	<p><b>Style J1427 • Size Men's 12" Length</b></p>
	
<p><b>Style 2212 • Sizes 7-10 13" Length</b></p>	<p><b>Style 2224 • Sizes 7-11 13" Length</b></p>
	
<p><b>Style 2418 • Sizes 7-12 13" Length</b></p>	<p><b>Style 2412 • Sizes 7-11 13" Length</b></p>

## Neoprene, Neoprene/ Latex and Nitrile Gloves

Protection from chemicals, oils, acids, solvents and caustics. Unsupported styles have a textured palm.

**Premium Supported Neoprene**  
Curved fingers provide a natural fit and comfort.

▲ **Style J4007- Knit Wrist Smooth**

▲ **Style J1427 - 12" Smooth**

▲ **Style J1427RF - 12" Rough**

Jersey lined. Black. Size: Men's.

### Unsupported Neoprene

Chemical resistance to solvents, acids and oils.

**Flock Lined, 13"**

▲ **Style 2212 - 18 mil**

Black. Sizes: 7-10.

▲ **Style 32212\* - 28 mil**

Black. Sizes: M-3XL.

### Neoprene over Latex

Chemical resistance with outstanding dexterity.

**Flock lined, Blue/Yellow, 13"**

**POSIGRIP**

▲ **Style 2224 - 28 mil** - Sizes: 7-11.

▲ **Style 33224\* - 28 mil**

Sizes: M-3XL.

### Premium Nitrile

Protects against abrasion, cuts, and a range of solvents, fats and chemicals.

**Flock Lined, Green, 13"**

**POSIGRIP**

▲ **Style 2418 - 15 mil** - Sizes: 7-12.

▲ **Style 2420 - 18 mil** - Sizes: 8-11.

**Unlined, Green, 13"**

**POSIGRIP**

▲ **Style 2412 - 12 mil** - Sizes: 7-11.

▲ **Style 2415 - 15 mil** - Sizes: 8-11.

**Unlined, Green, 18"**

▲ **Style 2218 - 22 mil** - Sizes: 9-11.

### Standard Nitrile

**Unlined, Green, 13"**

▲ **Style 2417 - 15 mil** - Sizes: 8-12.

▲ **Style 33418\* - 15 mil**

Sizes: M-3XL.

▲ **Style 33413\* - 12 mil**

Sizes: M-3XL.

\*Packaged 12 per polybag. Other gloves are sold in bags of 12 with each pair also polybagged.

**Note:** Unsupported gloves are USDA accepted for meat and poultry applications.

# chemical - latex rubber/coated

• MAINTENANCE • GENERAL LABOR • JANITORIAL • FOOD SERVICE

## Unsupported Latex and Palm-Coated Gloves

### Unsupported Latex†

#### Blue Latex

##### Premium Unlined

▲ Style 2344 - 19 mil

▲ Style 3344\* - 17 mil

Sizes: 7-10.

**POSIGRIP**

##### Premium Flock Lined

▲ Style 2313 - 21 mil

Sizes: 7-10.

**POSIGRIP**

#### Standard, Blue

▲ Style 33313\* - 21 mil - Sizes: 6-10.

### Yellow Latex - Flock Lined

#### Premium

▲ Style 2312 - 22 mil

Sizes: 7-10.

**POSIGRIP**

#### Standard

▲ Style 3312\* - 18 mil - Sizes: 7-10.

### Orange Latex - Flock Lined

#### Premium

▲ Style 2208 - 28 mil

Sizes: S-XL.

**POSIGRIP**

#### Standard

▲ Style 33208\* - 28 mil - Sizes: M-3XL.

### Amber Latex - Unlined

#### Premium

▲ Style 2343 - 19 mil

Sizes: 7-10.

**POSIGRIP**

#### Standard

▲ Style 3343\* - 17 mil - Sizes: 7-10.

\*Packaged 12 per polybag. Other gloves are sold in bags of 12 with each pair also polybagged.

†USDA accepted for use in meat and poultry applications.

### Supported Rubber

#### Rubber Palm-Coated

Latex palm coating for superior grip.

- Cut and abrasion protection.
- Soft jersey lining.
- Size: Men's.

▲ Style 3001 - Knit Wrist

▲ Style 3003 - Safety Cuff  
Crinkle finish.

▲ Style 3005 - Gauntlet Cuff  
Smooth finish.

	
Style 2344 • Sizes 7-10 12" Length	Style 2208 • Sizes S-XL 13" Length
	 Crinkle Finish
Style 2343 • Sizes 7-10 13" Length	Style 3001 • Size Men's Knit Wrist
 Crinkle Finish	 Smooth Finish
Style 3003 • Size Men's Safety Cuff	Style 3005 • Size Men's Gauntlet Cuff



# latex/nitrile/vinyl/poly - disposable

• MEDICAL EXAM • DENTISTRY • ASSEMBLY • FOOD SERVICE



**Style 2550 • Sizes S-XL**  
14 mil



**Style 2800 • Sizes XS-XL**  
5 mil



**Style 2910 • Sizes S-XL**  
5 mil



**Style 2700 • Sizes S-XL**  
5 mil



**Style 2400R • Sizes S-L**  
1 mil



**Style CILLP/O and CINLP/O**  
One Size • 5 mil

## Disposable Gloves

### PosiShield™ Medical Grade Latex

#### ▲ Style 2550 - Powder Free

14 mil for high risk EMT tasks. Resists organic acids, alcohols, caustics, animal fats, ketonic solvents and mild detergents. 50/box. Blue.  
• Sizes: S-XL.

#### ▲ Style 2500 - Powdered

#### ▲ Style 2800 - Powder Free

5 mil. White. 100/box. Sizes: XS-XL (Style 2500) or S-XL (Style 2800).

#### ▲ Style 2500T - Powdered

Textured for added grip. 5 mil. White. 100/box. Sizes: S-XL.

### Industrial Grade Latex

#### ▲ Style 2500I - Powdered

#### ▲ Style 2800I - Powder Free

5 mil. White. 100/box. Sizes: S-XL

### PosiShield™ Industrial Grade Nitrile

#### ▲ Style 2900 - Powdered

5 mil. 100/box. Blue. Sizes: S-XL.

#### ▲ Style 2910 - Powder Free

5 mil. 100/box. Blue. Sizes: XS-XXL.

### Industrial Grade Vinyl

#### ▲ Style 2710 - Powdered

5 mil. Blue. 100/box. Sizes: S-XXL.

#### ▲ Style 2700 - Powdered

5 mil. Clear. 100/box. Sizes: S-XXL.

#### ▲ Style 2750 - Powder Free

5 mil. Clear. 100/box. Sizes: S-XL.

### Polyethylene

#### ▲ Style 2400R\* - Powder Free

1 mil. Clear. 100/box. Sizes: S-L.

### Gloves on the Go™

#### ▲ Style CILLP/O - White Latex

#### ▲ Style CINLP/O - Gray Nitrile

Convenient dispenser canister holds 50 gloves. 5 mil. Powdered.

Note: Products containing natural rubber latex may cause allergic reactions in individuals allergic to natural rubber latex.

\*Sold by the case. 10 boxes/case.

# apparel - POSI-WEAR™

- PAINTING • CLEANING • ASBESTOS ABATEMENT • MANUFACTURING
- PHARMACEUTICALS • FOOD PROCESSING

**POSI-WEAR™**

## POSI-WEAR™

### Limited-Use Coveralls

An alternative to DuPont Tyvek®. An outer layer creates a 100% barrier against chemical and acid splash. The antistatic fabric is ideal for use in paint booths, tank cleaning and mixing operations. Also recommended for asbestos removal and general maintenance.

### Coveralls

Zipper front for easy donning. Several configurations available for varying coverage.

#### White

- ▲ **Style 3700** - Open wrists/ankles, collar. Sizes: M-5XL.
- ▲ **Style 3702** - Elastic wrists/ankles, collar. Sizes: M-5XL.
- ▲ **Style 3706** - Elastic wrists/ankles, attached hood. Sizes: M-5XL.
- ▲ **Style 3709** - Elastic wrists/ankles, attached hood/boots. Sizes: M-4XL.

#### Yellow

- ▲ **Style 3675** - Open wrists/ankles, collar. Sizes: M-4XL.
- ▲ **Style 3677** - Elastic wrists/ankles, collar. Sizes: XL-4XL.
- ▲ **Style 3678** - Elastic wrists/ankles, attached hood. Sizes: M-5XL.
- ▲ **Style 3679** - Elastic wrists/ankles, attached hood/boots. Sizes: M-4XL.

### Lab Coats

Snap front closure. Comfortable protection when full coverage isn't needed.

- ▲ **Style 3718** - Open wrists, no pockets. Sizes: L-3XL.
- ▲ **Style 3719** - Elastic wrists, no pockets. Sizes: M-4XL.
- ▲ **Style 3720** - Open wrists, chest and hip pockets. Sizes: M-4XL.



**Style 3700 • Sizes M-5XL**



**Style 3675 • Sizes M-4XL**



**Style 3720 • Sizes M-4XL**



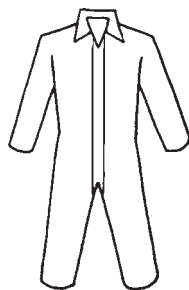
All styles available with an attached hood.



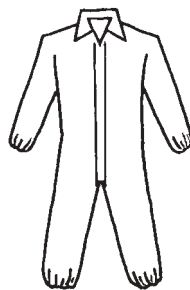
All styles available with attached boots.



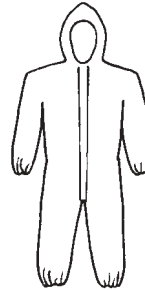
All styles available with elastic wrists.



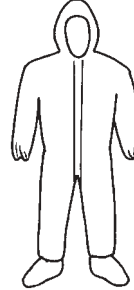
Open Wrists/  
Ankles



Elastic Wrists/  
Ankles



Attached Hood



Attached Hood/  
Boots



# POSI-WEAR™ - apparel

• PAINTING • CLEANING • ASBESTOS ABATEMENT • MANUFACTURING

**POSI-WEAR<sup>4</sup>** **POSI-WEAR<sup>3</sup>** • PHARMACEUTICALS • FOOD PROCESSING



**Style 3400 • Sizes M-5XL**  
POSI-WEAR<sup>4</sup>™



**Style C3800 • Sizes M-4XL**  
POSI-WEAR<sup>3</sup>™



**Style C3900 • Sizes M-4XL**  
POSI-WEAR<sup>3</sup>™



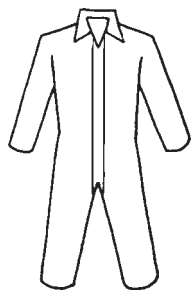
All styles available with  
attached hood.



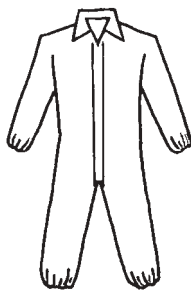
All styles available with  
attached boots.



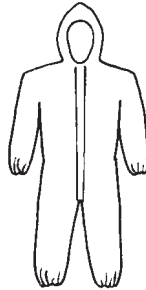
All styles available with  
elastic wrists.



Open Wrists/  
Ankles



Elastic Wrists/  
Ankles



Attached Hood



Attached Hood/  
Boots

## POSI-WEAR<sup>4</sup>™ and POSI-WEAR<sup>3</sup>™ Coveralls

POSI-WEAR<sup>4</sup>™ is SPS (spunbond-polyethylene-spunbond) material. The inner layer is an excellent wet/dry barrier. Ideal for asbestos abatement, mold remediation, pharmaceuticals and food processing.

POSI-WEAR<sup>3</sup>™ is SMS (spunbond-meltblown-spunbond) material with excellent breathability and strength. For use in general industry, asbestos abatement, manufacturing, assembly, pharmaceuticals and food processing.

### POSI-WEAR<sup>4</sup>™ Coveralls

#### White

- ▲ **Style 3400** - Open wrists/ankles, collar. Sizes: M-5XL.
- ▲ **Style 3402** - Elastic wrists/ankles, collar. Sizes: M-4XL.
- ▲ **Style 3406** - Elastic wrists/ankles, attached hood. Sizes: M-5XL.
- ▲ **Style 3409** - Elastic wrists/ankles, attached hood/boots. Sizes: M-5XL.

### POSI-WEAR<sup>3</sup>™ Coveralls

#### White

- ▲ **Style C3800** - Open wrists/ankles, collar. Sizes: M-4XL.
- ▲ **Style C3802** - Elastic wrists/ankles, collar. Sizes: M-4XL.
- ▲ **Style C3806** - Elastic wrists/ankles, attached hood. Sizes: M-4XL.
- ▲ **Style C3809** - Elastic wrists/ankles, attached hood/boots. Sizes: M-4XL.

#### Gray

- ▲ **Style C3900** - Open wrists/ankles, collar. Sizes: M-4XL.
- ▲ **Style C3902** - Elastic wrists/ankles, collar. Sizes: M-3XL.
- ▲ **Style C3906** - Elastic wrists/ankles, attached hood. Sizes: M-4XL.
- ▲ **Style C3909** - Elastic wrists/ankles, attached hood/boots. Sizes: M-3XL.

# apparel - POSI-WEAR™

- PAINTING • CLEANING • ASBESTOS ABATEMENT • MANUFACTURING
- PHARMACEUTICALS • FOOD PROCESSING



**Style 3717 Shirt • Sizes L-3XL**  
**Style 3716 Pants • Sizes M-3XL**



**Style 3722 • Size 28" x 36"**



**Style 3715 • One Size**



**Style 3714 One Size**



**Style 3713 One Size**



**Style 3712 • 18"**



**Shirt**



**Pants**



**Shoe Cover**



**Boot Cover**

Pants have a secure-fitting elastic waist.

Side View

## POSI-WEAR™ and POSI-WEAR<sup>3</sup>™ Apparel

POSI-WEAR™ is an alternative to DuPont Tyvek®. The fabric has an outer layer which creates a 100% barrier against chemical splash, including acids. The antistatic fabric can be used in paint booths, tank cleaning and mixing operations. It is also recommended for asbestos removal and general maintenance.

### **POSI-WEAR™**

POSI-WEAR™	STYLE	SIZE	CASE QTY
<b>Shirts/Pants</b>			
Shirt, Snap Front Closure, White	3717	L-3XL	50
Pants w/Elastic Waist, White	3716	M-3XL	50
<b>Shoe/Boot Covers</b>			
Shoe Cover, White	3713	Universal	200
Boot Cover, 18", White	3714	Universal	200
<b>Hood - Shoulder Length</b>			
Hood, Elastic at Face	3715	Universal	100
<b>Sleeves</b>			
Sleeve, White	3712	18"	200
<b>Apron</b>			
Apron, White	3722	28" x 36"	100

POSI-WEAR<sup>3</sup>™ is an SMS (spunbond-meltblown-spunbond) material that has excellent breathability and fabric strength. It is ideal for use in general industry, asbestos abatement, manufacturing, assembly, pharmaceuticals and food processing.

### **POSI-WEAR<sup>3</sup>™**

POSI-WEAR <sup>3</sup> ™ - SMS	STYLE	SIZE	CASE QTY
<b>Shirts/Pants</b>			
Shirt, Snap Front Closure, White	C3817	M-3XL	50
Pants w/Elastic Waist, White	C3816	L-3XL	50
<b>Shoe/Boot Covers</b>			
Shoe Cover, White	C3813	Universal	200
Shoe Cover, Gray	C3913	Universal	200
<b>Hood - Shoulder Length</b>			
SMS Hood, Elastic at Face	C3815	Universal	100
<b>Sleeves</b>			
SMS Sleeve, White	C3812	18"	200



# polypropylene - apparel

• MANUFACTURING • PHARMACEUTICALS • PAINTING • CLEANING • FOOD PROCESSING

## Polypropylene Apparel

### Spunbond Polypropylene

Minimal protection against liquids but is a cost-effective dry particulate barrier. Regular weight or heavyweight for tougher applications.

### PE-Coated Polypropylene

Heavyweight polyethylene-coated polypropylene enhances protection by providing limited liquid holdout as well as a particulate barrier.



Available with attached hood.

Available with attached boots.

Elastic wrist styles for a secure fit.

Style 3500 • Sizes S-4XL

Style 3520/XL • Size XL

Style USK-065  
Universal Size

#### COVERALLS - ZIPPER FRONT

##### Regular Weight, 25/Case

Open Wrist and Ankle, Collar  
Elastic Wrist and Ankle, Collar  
Elastic Wrist/Ankle w/Attached Hood  
Elastic Wrist/Ankle w/Attached Hood/Boot

WHITE	SIZE	NAVY	SIZE
3500	S - 4XL	3575	S - 3XL
3502	S - 4XL	—	—
3506	M - 3XL	3584	XL - 3XL
3509	M - 5XL	—	—

##### Heavyweight, 25/Case

Open Wrist and Ankle, Collar  
Elastic Wrist and Ankle, Collar  
Elastic Wrist/Ankle w/Attached Hood  
Elastic Wrist/Ankle w/Attached Hood/Boot

WHITE	SIZE	NAVY	SIZE
U1100	M - 4XL	U1100B	M - 3XL
U1200	M - 5XL	U1200B	M - 4XL
U1400	L - 4XL	—	—
U1600	L - 4XL	—	—

##### PE Coated (Heavyweight), 25/Case

Open Wrist and Ankle, Collar  
Elastic Wrist and Ankle, Collar  
Elastic Wrist/Ankle w/Attached Hood  
Elastic Wrist/Ankle w/Attached Hood/Boot

WHITE	SIZE	NAVY	SIZE
U1130	M - 4XL	—	—
U1230	M - 4XL	—	—
U1430	L - 4XL	—	—
U1630	L - 4XL	—	—

#### SHIRT AND PANTS

##### Regular Weight, 50/Case

Shirt, Snap Front  
Pants w/Elastic Waist

WHITE	SIZE	NAVY	SIZE
3515	M - 3XL	—	—
3516	S - 3XL	—	—

##### Heavyweight, 50/Case

Shirt, Snap Front  
Pants w/Elastic Waist

WHITE	SIZE	NAVY	SIZE
U1900	XL - 4XL	—	—
U2000	XL - 3XL	—	—

#### SMOCKS AND WRAPS

##### Regular Weight

Smock, White  
Pullover Poultry Smock  
PE Coated, Wrap Smock  
Wrap Smock Knit Wrist

STYLE	SIZE	COLOR	CASE QTY
3520/XL	XL	White	50
USK-065	Universal	White	100
UWS-2730	Universal	White	50
UWS-2727B	Universal	Blue	30



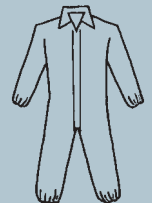
Style 3515  
Sizes M-3XL



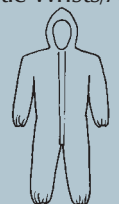
Open Wrists/Ankles



Style 3516  
Sizes S-3XL



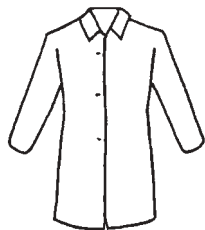
Elastic Wrists/Ankles



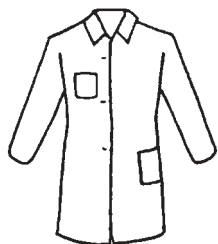
Attached Hood

# apparel - polypropylene

• GENERAL LABOR • PAINTING • CLEANING • LABORATORY



**Style 3511 • Sizes M-4XL**  
No Pockets



**Style 3514 • Sizes M-4XL**  
Hip and Chest Pockets



**Style U2301 • One Size**



**Style U2010 • One Size**



**Style UB-18-500 • 18"**  
**Style UBC-500 • One Size**

## Polypropylene Apparel

A wide range of spunbonded polypropylene apparel provides an adequate dry particulate barrier for several applications. Extremely cost-effective protection available in lightweight or heavyweight styles.

A polyethylene coating adds another level of protection to Lab Coats by providing both limited liquid holdout and a particulate barrier.

### LAB COATS, 30/CASE

	REGULAR WEIGHT		HEAVYWEIGHT			
	White	Size	White	Size	Navy Blue	Size
No Pocket	3511	M - 4XL	U1710	S - 5XL	U1710B	M - 4XL
Elastic Wrists, No Pocket	3512	M - 4XL	U1711	L - 2XL	—	—
Chest and Hip Pockets	3514	M - 4XL	U1730	M - 5XL	U1730B	XL - 3XL
<b>PE Coated, 30 Case</b>						
PE Coated, No Pockets	U1530	M - 3XL				
PE Coated, Chest and Hip Pockets	U1830	M - 3XL				

### BOUFFANT CAPS

	WHITE 500/CS	WHITE 1000/CS	BLUE/QTY	GREEN/QTY
18" Bouffant Cap	UB-18-500	UB-18-1000	—	—
19" Bouffant Cap	UB-19-500	UB-19-1000	UB-19-1000B	—
21" Bouffant Cap	UB-21-500	UB-21-1000	UB-21-1000B	UB-21-1000G
24" Bouffant Cap	UB-24-500	UB-24-1000	UB-24-1000B	UB-24-1000G
24" Bouffant Cap	—	—	UB-24-500B	UB-24-500G
28" Bouffant Cap	UB-28-500	UB-28-1000	UB-28-500B	—
30" Bouffant Cap	UB-30-500	—	UB-30-500B	—

### SHOE/BOOT COVERS, 200/CASE

	POLYPROPYLENE		PE COATED
	White	Navy	White
Shoe Cover	3518	3518B	—
Shoe Cover w/Non-Skid Tread	—	3518BNS	3763
Boot Cover, 18"	3519	3519B	3761
Boot Cover, 14"	3521	—	3764

### BOUFFANT CAPS - DISPENSER BOXES

21" White	UDP-21-500	Style UDP-21-500 Dispenser
24" White	UDP-24-500	



BEARD COVERS	WHITE 500/CS	WHITE 1000/CS	BLUE 1000/CS
Beard Cover	UBC-500	UBC-1000	UBC-1000B

### HOODS/BOXER SHORTS, 100/CASE

	WHITE	NAVY
Elastic Around the Face	U2300	—
Shoulder Length w/Elastic Face	U2301	—
Shoulder Length w/Elastic Face - XL	U2302	—
Boxer Shorts, 100/Case	U2010	U2010B

### APRONS, 100/CASE

	WHITE	NAVY
Polypropylene, 28" x 36"	U2500	U2500B
PE Coated, 28" x 36"	U2510	U2510B

**Style 3518**  
One Size



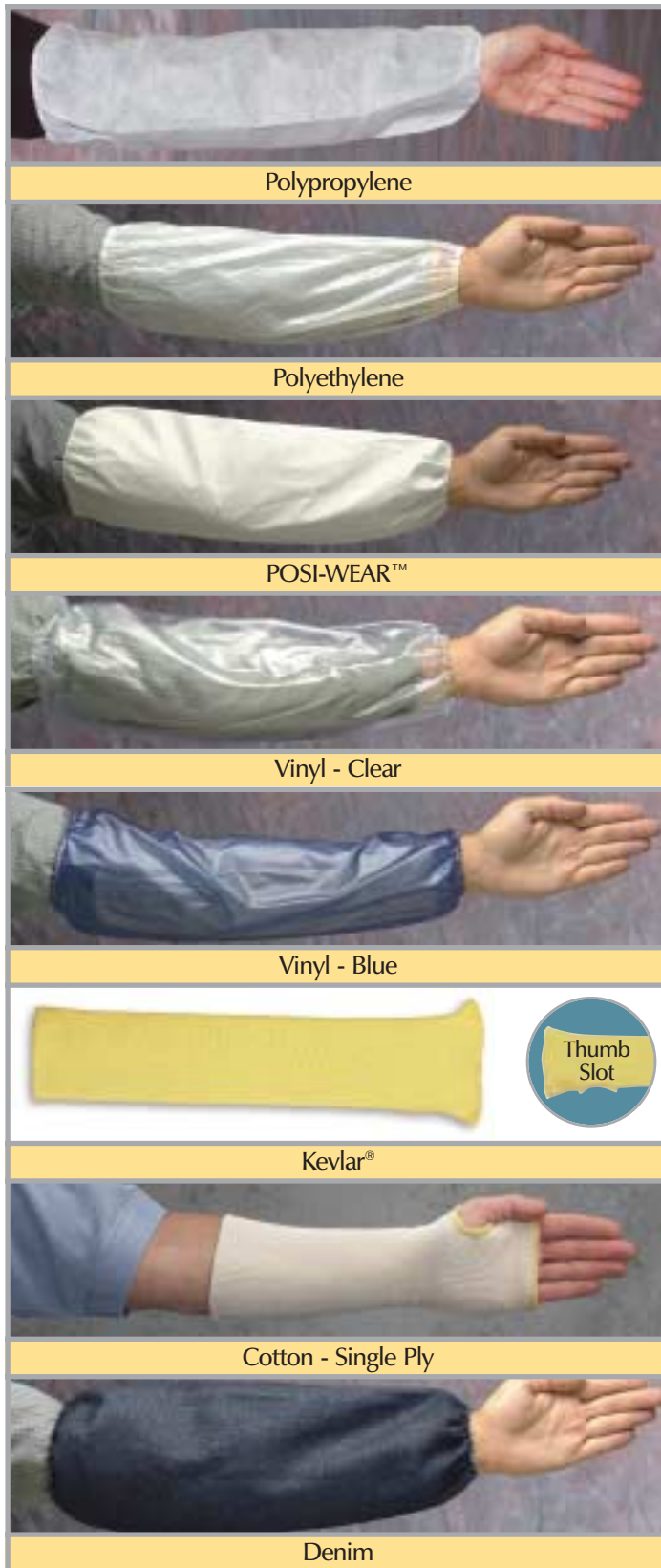
**Style 3519**  
18"

\*\*Sleeves also available see page 53



# sleeves - apparel

• FOOD PROCESSING • MANUFACTURING • METAL HANDLING



## Protective Sleeves

Forearm coverage ranging from the light splash protection of polyethylene-coated spunbond polypropylene and POSI-WEAR™, to the cut and abrasion resistance offered by Kevlar® or denim.



Tubing

SLEEVES	STYLE	QTY	UNIT
<b>Spunbond Polypropylene</b>			
SBP 18" White Sleeve	U2400	200	CS
SBP 18" Navy Sleeve	U2400B	200	CS
SBP 22" White Sleeve	U2422	200	CS
<b>Spunbond Polypropylene - PE Coated</b>			
SBP 18" White Sleeve	C3712	200	CS
<b>Polyethylene</b>			
1 mil 16", Clear	2416PE	1000	CS
1 mil 16", Clear	2416PE-1000	2000	CS
1 mil 18", Clear	2418PE	1000	CS
1 mil 18", Clear	2418PE-1000	2000	CS
<b>POSI-WEAR™</b>			
18" Sleeve, White	3712	200	CS
18" Sleeve, White, Jumbo	3712J	200	CS
<b>POSI-WEAR<sup>3</sup>™</b>			
SMS 18" Sleeve, White	C3812	200	CS
<b>Vinyl</b>			
4 mil 18" Sleeve - Clear	UVC-4HS	12	DZ
8 mil 18" Sleeve - Blue	UVB-8HS	12	DZ
8 mil 18" Sleeve - Clear	UVC-8HS	12	DZ
8 mil 24" Sleeve - Clear	UVC-8HS-24	12	DZ
8 mil 18" Sleeve - White	UVW-8HS	12	DZ
<b>Kevlar® without Thumb Hole</b>			
10" Kevlar Sleeve	2510K	200	EA
12" Kevlar Sleeve	2512K	200	EA
14" Kevlar Sleeve	2514K	200	EA
18" Kevlar Sleeve	2518K	200	EA
24" Kevlar Sleeve	2524K	200	EA
<b>Kevlar® with Thumb Hole</b>			
10" Kevlar Sleeve	2510KT	200	EA
12" Kevlar Sleeve	2512KT	200	EA
14" Kevlar Sleeve	2514KT	200	EA
18" Kevlar Sleeve	2518KT	200	EA
24" Kevlar Sleeve	2524KT	200	EA
<b>Kevlar® Single Ply</b>			
10" Single Ply Kevlar Sleeve	2510KE	200	EA
14" Single Ply Kevlar Sleeve	2514KE	200	EA
24" Single Ply Kevlar Sleeve	2524KE	200	EA
<b>Kevlar® Single Ply w/Thumb Hole</b>			
12" Single Ply Kevlar Sleeve	2512KTE	200	EA
18" Single Ply Kevlar Sleeve	2518KTE	200	EA
<b>Kevlar® Single Ply w/Velcro® Strap</b>			
20" Kevlar Sleeve Velcro Strap	2520KV	200	EA
24" Kevlar Sleeve w/Thumb Hole, Velcro Strap	2524KTV	200	EA
<b>Cotton</b>			
18" Cotton Sleeve Single Ply	2518NE	200	EA
14" Cotton, Thumb Hole	2514NT	200	EA
3" x 50 yds Cotton Tubing Roll	2530	1	EA
<b>Denim</b>			
18" Denim Sleeve Elastic at Both Ends	C18D8	144	EA

# apparel - aprons

• CLEANING • FOOD PROCESSING • LABORATORY



**Style 3722**  
POSI-WEAR™



**Style UDP-46-W**  
Polyethylene



**Style UE6B-55**  
Vinyl Die Cut



**Style UHB-55**  
Vinyl Sewn Edge

## Aprons

POSI-WEAR™ creates a 100% barrier against chemical splash, including acids.

Spunbond polypropylene is a cost-effective fabric option that creates a reliable particulate barrier.

Polyethylene has excellent flexibility and resistance to chemicals, oils, fats and grease.

High-quality virgin vinyl provides excellent resistance to acids, alkalis, solvents, chemicals, oils, fats, grease and salt.

APRONS	STYLE	SIZE	COLOR	CASE QTY	UNIT
<b>POSI-WEAR™</b>					
Posi-Wear w/Ties	3722	28" x 36"	White	100	CS
<b>Spunbond Polypropylene (SBP)</b>					
SBP with Ties	U2500	28" x 36"	White	100	CS
SBP with Ties	U2500B	28" x 36"	Blue	100	CS
<b>SBP- PE Coated</b>					
PE Coated SBP, w/Ties	U2510	28" x 36"	White	100	CS
PE Coated SBP, w/Ties	U2510B	28" x 36"	Blue	100	CS
<b>Polyethylene</b>					
Polyethylene w/Ties	2442PE	24" x 42"	White	1000	CS
Polyethylene w/Ties	2846PE	28" x 46"	White	1000	CS
Non-Embossed, 100/Bag	UDP-46-W	28" x 46"	White	1000	10/CS
Non-Embossed, 100/Bag	UDP-55-W	28" x 55"	White	1000	10/CS
Embossed, 100/Dispenser Box	DP-46	28" x 46"	White	1000	10/CS
Embossed, 100/Dispenser Box	DP-55	28" x 55"	White	1000	10/CS

STYLE	THICKNESS	SIZE	UNIT	STYLE	THICKNESS	SIZE	UNIT
<b>Vinyl - Die Cut, Clear, 12/Case</b>				<b>Vinyl - Sewn Edge, Blue, 6/Case</b>			
UE4C-36	4 mil	27" x 36"	DZ	UHB-42	6 mil	35" x 42"	DZ
UE4C-40	4 mil	27" x 40"	DZ	UHB-45	6 mil	35" x 45"	DZ
UE4C-42	4 mil	27" x 42"	DZ	UHB-48	6 mil	35" X 48"	DZ
UE4C-45	4 mil	27" x 45"	DZ	UHB-50	6 mil	35" x 50"	DZ
				UHB-55	6 mil	35" x 55"	DZ
<b>Vinyl - Die Cut, Blue, 6/Case</b>				<b>Vinyl - Sewn Edge, White, 6/Case</b>			
UE6B-42	6 mil	35" x 42"	DZ	UHW-45	6 mil	35" x 45"	DZ
UE6B-45	6 mil	35" x 45"	DZ	UHW-50	6 mil	35" x 50"	DZ
UE6B-48	6 mil	35" x 48"	DZ				
UE6B-50	6 mil	35" x 50"	DZ	<b>Vinyl - Sewn Edge, Blue, 6/Case</b>			
UE6B-55	6 mil	35" x 55"	DZ	UPB-42	8 mil	35" x 42"	DZ
<b>Vinyl - Die Cut, White, 6/Case</b>				UPB-45	8 mil	35" x 45"	DZ
UE6W-45	6 mil	35" x 45"	DZ	UPB-48	8 mil	35" x 48"	DZ
UE8W-48	8 mil	35" x 48"	DZ	UPB-50	8 mil	35" x 50"	DZ
				UPB-55	8 mil	35" x 55"	DZ



# aprons - apparel

• FOOD PROCESSING • LABORATORY • MAINTENANCE • CONSTRUCTION • CARPENTRY



**Style UPC-36**  
Vinyl Sewn with Grommets



**Style UG-20-50SP**  
20 mil Vinyl



**Style A2836D1**  
Denim No Pockets



**Style A2836D4**  
Denim Two Pockets

STYLE	THICKNESS	SIZE	COLOR	UNIT
<b>Vinyl -Sewn with Grommets, 6/Case</b>				
UPC-36	8 mil	35" x 36"	Clear	DZ
UPC-45	8 mil	35" x 45"	Clear	DZ
UPC-48	8 mil	35" x 48"	Clear	DZ
UPC-55	8 mil	35" x 55"	Clear	DZ
UPW-36	8 mil	35" x 36"	White	DZ
UPW-42	8 mil	35" x 42"	White	DZ
UPW-45	8 mil	35" x 45"	White	DZ
UPW-48	8 mil	35" x 48"	White	DZ
UPW-50	8 mil	35" x 50"	White	DZ

STYLE	THICKNESS	SIZE	COLOR	UNIT
<b>Heavyweight Vinyl with Grommets, 3/Case</b>				
UW-20-45	20 mil	35" x 45"	White	DZ
UW-20-50	20 mil	35" x 50"	White	DZ
UG-20-45	20 mil	35" x 45"	Green	DZ
UG-20-50	20 mil	35" x 50"	Green	DZ

<b>Apron with Stomach Patch, Heavyweight Vinyl with Grommets, 3/Case</b>				
UW-20-50SP	20 mil	35" x 50"	White	DZ
UG-20-45SP	20 mil	35" x 45"	Green	DZ
UG-20-50SP	20 mil	35" x 50"	Green	DZ

## Denim Shop Aprons

- General industrial, maintenance, construction, carpentry or shop applications.
- Heavy-duty preshrunk denim.
- Durable metal grommets and serged seams.
- Launderable.



APRONS	STYLE	POCKETS	SIZE	UNIT
<b>Carpenter Waist Apron, 144/Case</b>				
Carpenter Waist Apron	A2412D2	2	12" x 24"	EA
Carpenter Waist Apron	A2412D3	3	12" x 24"	EA
Carpenter Waist Apron	A2412D4	4	12" x 24"	EA
<b>Denim Apron with Grommets, 72/Case</b>				
No Pocket	A2836D1	0	28" x 36"	EA
No Pocket	A2842D1	0	28" x 42"	EA
Hip Pocket	A2836D2	1	28" x 36"	EA
Two Hip Pockets	A2836D22	2	28" x 36"	EA
Chest Pocket	A2836D3	1	28" x 36"	EA
Chest Pocket, Split Leg	A2836D3BTS	1	28" x 36"	EA
Hip and Chest Pockets	A2836D4	2	28" x 36"	EA
Hip and Chest Pockets	A2842D4	2	28" x 42"	EA
Two Hip and One Chest Pocket	A2836D5	3	28" x 36"	EA
Hip and Swing Chest Pockets	A2836D6	2	28" x 36"	EA
Chest and Two Hip Pockets	A2854D11	3	28" x 54"	EA
<b>Denim Apron with Attached Ties, 72/Case</b>				
No Pocket	A2836D1BT	0	28" x 36"	EA
Chest Pocket	A2836D3BT	1	28" x 36"	EA
Hip Pocket	A2836D2BT	1	28" x 36"	EA
Hip and Chest Pockets	A2836D4BT	2	28" x 36"	EA
Hip and Chest Pockets	A2842D4BT	2	28" x 42"	EA
Hip and Chest Pockets, Attached Denim Waste Ties	A2836D4BDT	2	28" x 36"	EA
Hip and Chest Pockets, Denim Neck Strap	A2836D4DNS	2	28" x 36"	EA
Two Hip and One Chest Pocket	A2836D5BT	3	28" x 36"	EA
Hip and Swing Chest Pockets	A2836D6BT	3	28" x 36"	EA
Two Hip and Swing Chest Pockets	A2836D62BT	2	28" x 36"	EA

# rainwear - rainsuits

• CONSTRUCTION • ROAD WORK • UTILITIES • SURVEY CREWS • FORESTRY



## Master Gear™ Rainwear

A wide range of styles provides a three-piece rainsuit option for any application.

- Includes Jacket, Detachable Hood and Bib Overalls.
- Open wrists and ankles have adjustable snap closures.
- Overalls feature side sizing snaps.
- Nonconductive/noncorrosive hardware.

### ▲ Style 4035OR -Orange

#### ▲ Style 4035 -Yellow

.35mm PVC on polyester for light to medium-duty applications.

4035OR sizes: M-3XL. 4035 sizes: S-6XL.

- Jacket has a vented cape back, five-snap front closure with storm flap, two front pockets with flaps and a corduroy collar.
- Drawstring hood has four snaps and a chin strap.
- Overalls have adjustable elastic suspenders with triangular D-ring buckles and studs. Single snap fly.

#### ▲ Style 4036 - Jacket

#### ▲ Style 4037 - Overalls

Jacket or Overalls only from the 4035 rainsuit. Yellow. Sizes M-4XL.

#### ▲ Style 4025E

.25mm single-ply PVC for low-cost light-duty protection. Sizes: M-5XL.

- Jacket has a vented cape back, underarm vents, two front pockets with flaps and a corduroy collar.
- Drawstring Hood has four snaps.
- Overalls have adjustable elastic suspenders with triangular D-ring buckles and studs. Single-snap fly.

#### ▲ Style 4033 - ANSI Class III

Poly Oxford material with a polyurethane coating and stitched seams. ANSI Class III certified and ideal for road work, railroad, utilities, forestry, survey crews and law enforcement. Sizes: M-3XL.

- High-visibility lime green Jacket has 2" 3M™ Scotchlite™ reflective stripes on arms and torso. Five-snap front closure, two flapped front pockets with snap closures. Corduroy collar.
- Lime green Hood has four snaps and a chin strap.
- Overalls have 2" 3M™ Scotchlite™ reflective stripes. Adjustable elastic suspenders have quick side-release buckles. Single-snap fly.

#### ▲ Style 4031

.35mm PVC on polyester. Good visibility for railroad, utilities, forestry and construction applications. High-visibility lime green. Sizes: M-5XL.

- Jacket has 1" 3M™ Scotchlite™ silver reflective tape stripes on arms and torso. Vented cape back, five-snap front closure with storm flap, two flapped front pockets with snap closures. Corduroy collar.
- Hood has four snaps and a chin strap.
- Overalls have a 1" 3M™ Scotchlite™ stripe. Adjustable elastic suspenders with quick side-release buckles. Single-snap fly.



**Style 4035OR**  
Sizes M-3XL  
PVC .35mm

**Style 4035**  
Sizes S-6XL  
PVC .35mm

**Style 4025E**  
Sizes M-5XL  
PVC .25mm



# rainsuits/boots - rainwear

- CONSTRUCTION • ROAD WORK • UTILITIES • SURVEY CREWS • FORESTRY
- CHEMICAL HANDLING • ENVIRONMENTAL CLEANUP

- ANSI Class III  
2" 3M™ Scotchlite™  
Reflective Tape



**3M™**  
**Scotchlite™**  
Reflective Material

- 1" 3M™ Scotchlite™  
Reflective Tape

**Style 4033**  
Sizes M-3XL  
Poly Oxford Material

**Style 4031**  
Sizes M-5XL  
PVC/Poly .35mm

## Rubber Overboots

100% waterproof protection designed to fit easily over shoes or boots.

### ▲ Style 8200 - Slush Boot

17" overshoe has a cross rib outsole to reduce slippage. Net lining for easy donning. Adjustable side strap. Yellow with a black sole. Sizes: 9-18.

### ▲ Style 8400 - Nuke Boot

Cost-effective liquid and chemical barrier. Textured sole for traction. Yellow. Sizes: M-XXL.



**Style 8200 • Sizes: 9-18**



**Style 8400 • Sizes: M-XXL**

# rainwear - raincoats/splash suits

- CONSTRUCTION • ROAD WORK • UTILITIES • SURVEY CREWS • FORESTRY
- CHEMICAL HANDLING • ENVIRONMENTAL CLEANUP

## Raincoats, Ponchos and Splash Suits

### ▲ Style 4160 - 60" Riding Coat

#### ▲ Style 4148 - 48" Raincoat

.35mm PVC on polyester. Vented cape back, snap front closure with storm flap. Detachable hood and corduroy collar.

- Riding Coat has one outside and one inside pocket, a badge holder, and two inner leg snaps which form chaps. Sizes: M-3XL.

- Raincoat has two outside pockets. Sizes S-4XL.

### ▲ Style 49102 - Poncho

.10mm single-ply PVC.

Attached hood. Assorted colors.

Size: 52" x 80".

### ▲ Style 4045 - Two-Piece Acid Suit

.40mm PVC/polyester/PVC. For heavy-duty applications. Ideal for use in chemical plants, refineries and cleanup applications. Chemical resistant and flame resistant in accordance with ASTM D 6413.

Sizes M-4XL.

- Jacket has an attached drawstring hood. Vented cape back, underarm vents, four-snap front closure with storm flap, two front pockets with flaps and open wrists with adjustable snap closures.
- Overalls have open ankles with adjustable snap closures. Adjustable elastic suspenders with triangular D-ring buckles and studs. Inside zipper pocket. Sizing Velcro® at the waist.

### ▲ Style 4040 - Two-Piece Splash Suit

.35mm PVC on polyester. Velcro® closures on all openings provide watertight seals. Ideal for pressure washing applications, environmental cleanup, and concrete work.

Sizes: M-5XL.

- Jacket has an attached hood with Velcro® chin strap. Snap-on neck guard for added protection. Four-snap front closure with Velcro® storm flap, open wrists with adjustable Velcro® closures. Drawstring at the waist.
- Overalls have open ankles with adjustable Velcro® closures. Adjustable elastic suspenders with center thumb cam buckles. Side sizing snaps.



Style 4160 • Sizes L-3XL  
PVC .35mm



Style 4148 • Sizes L-4XL  
PVC .35mm



Style 49102 • One Size  
PVC .10mm



Style 4045 • Sizes M-4XL  
PVC/Poly .40mm

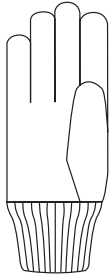


Neck guard snaps to the jacket and has a Velcro® strip at the top which attaches to a faceshield.

Style 4040 • Sizes M-5XL  
PVC/Poly .35mm

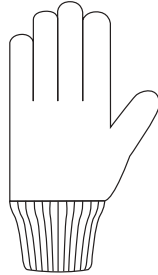


## GLOVE PATTERNS



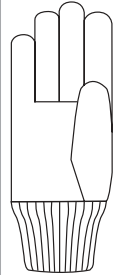
Seamless palm, with parallel seams on back of glove. This construction is best for cloth and lightweight gloves. It is designed for a roomy fit.

**CLUTE STYLE**



This style is not as form fitting but gloves fit, either hand and can be turned over when palm is worn out, to double the life span.

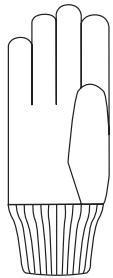
**REVERSIBLE STYLE**



Seamless back, horizontal seam in palm directly below center two fingers. This style is best for heavy-duty gloves. The "Gunn" seam is in the natural crease of the hand. It is the most comfortable style.

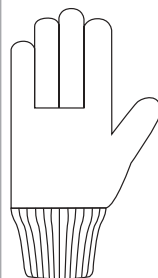
**GUNN STYLE**

## THUMB STYLES



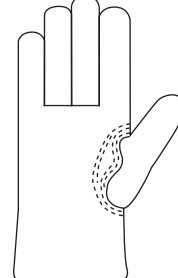
For closed-fisted work (gripping). The seams are out of the work surface during gripping activities.

**STRAIGHT THUMB**



For open-handed work (pushing, pulling). The seams are out of the work surface during open-handed activities.

**WING THUMB**

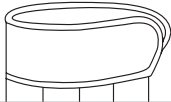


Use for same activities as wing thumb styles, but affords the strongest construction method. It is the most comfortable glove to wear.

**KEYSTONE THUMB**

## CUFF STYLES

Available in 2½" and 4½" • Starched, Rubberized, Plasticized

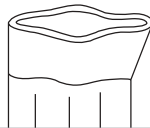


**SAFETY CUFF**

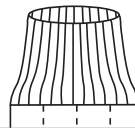
Available in 2½" and 4½" • Starched, Rubberized, Plasticized



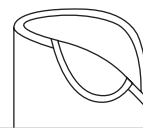
**GAUNTLET CUFF**



**BAND TOP**



**KNIT WRIST**



**SLIP-ON**

## HEMS

### Color-Coded Hems

Leathers, Kevlar® and Coated Gloves

XXS - Purple

XS - Yellow

S - Red

M - Green

L - Brown

XL - Dark Blue

XXL - Black

XXXL - Orange

### Strings

Men's - White

Women's - Light Blue

Youth - Yellow

## TYPES & CUTS OF LEATHER

### LEATHER CATEGORIES

**Premium:** The highest caliber leather makes the most durable and best fitting gloves in the leather line. Includes leather made of heavyweight side split cowhide, premium top grain deerskin, cowhide, goatskin and pigskin. All AAA – AA grade styles are of this level.

**Select:** Leather of consistent quality. Typically from the shoulder areas of the animal.

**Standard:** Leather work gloves that deliver the best possible value and quality. The economical choice.

### COWHIDE

The most commonly used leather within the glove industry due to its

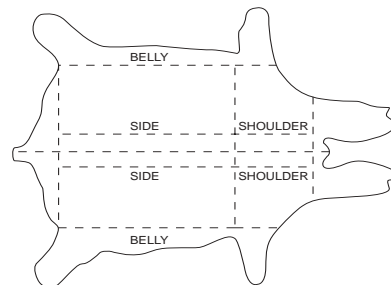
availability. It is warmer than pigskin and goatskin and the most heat resistant.

### GOATSKIN

The natural lanolin found in goatskin makes it one of the softest leathers. It is the most penetration proof of all leathers and very waterproof. Highly recommended for applications requiring tactile sensitivity.

### PIGSKIN

Pigskin has the greatest breathability due to its porous texture. Also, it tends to become softer with use and is the most waterproof. When laundered, this leather returns to its natural soft texture quicker than other leathers. It is also the most economical.



### DEERSKIN

One of nature's most luxurious, softest leathers, providing all-day comfort and sensitivity. It is the warmest of all leathers and also long wearing.

### GRAIN

The smooth outside of the hide.

This type of leather provides durability, dexterity, and is the most luxurious.

### SPLIT

The rougher inside of the hide. The different types are Side, Shoulder, or Belly Split.

**SIDE SPLIT-** comes from the rib area of the animal. It is the most uniform leather, has few imperfections and is the best for consumer appeal.

**SHOULDER SPLIT-** is more economical than side, but less durable. The additional movement of the animal in this shoulder area creates less fibers and a more visible texture difference.

**BELLY SPLIT-** is the most economical; however, it has the least consistency of texture and appearance.

# High-Visibility Rainwear & Gloves



**DISTRIBUTED BY:**

**WEST CHESTER HOLDINGS INC.**

100 Corridor Park Drive • Monroe, Ohio 45050 • 800-647-1900 • FAX 513-539-2827 • [www.west-chester.net](http://www.west-chester.net)

© Copyright 2006, WEST CHESTER HOLDINGS, INC. • Printed in USA • 08/06